

inceptor[®]
omni

OMNI TRICOLOUR
Fire-rated LED Downlight

Scolmore[®]
GROUP



inceptor
omni

OMNI TRICOLOUR | Fire-rated LED Downlight

The Inceptor® Omni is the latest addition to the Inceptor® range of cost effective integrated fire-rated downlights.

Existing technology found in the current Inceptor products and innovative new features have been combined within one fitting, providing cutting-edge features at a competitive price.

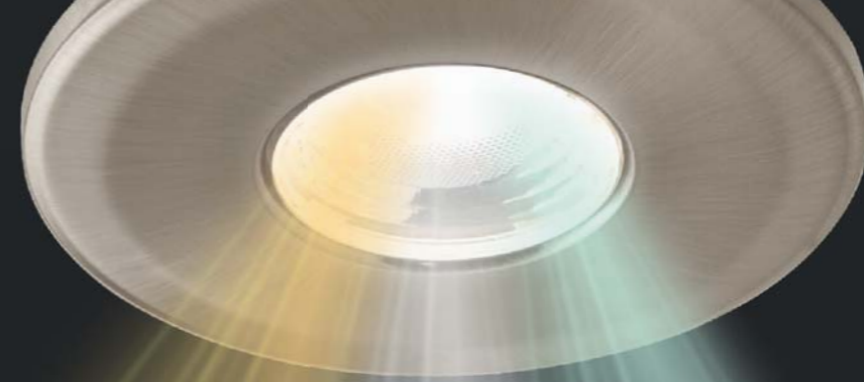
Key features include an adjustable colour temperature switch, allowing the selection of colour temperatures to suit the installation. Flexibility and ease of installation are the key factors in the design of this product.

The fitting also has the option to change bezels from a fixed version to adjustable option if required.*

*Fixed option supplied as standard, adjustable bezel can be purchased separately.

Inceptor® Omni incorporates our award winning FlameGuard® system technology and offers a 30, 60 & 90 minute fire rating and is acoustic and airflow compliant.

A removable Insulation Support Clip is provided for use when insulation is present.



5 YEAR
WARRANTY

Only valid once registered online at www.scolmore.com

2700K
40° BEAM ANGLE
WARM WHITE
500LM

4200K
50° BEAM ANGLE
COOL WHITE
580LM

6500K
65° BEAM ANGLE
DAYLIGHT
550LM

Interchangeable Fixed or Adjustable Bezels



Fixed
Standard (IP65)



Adjustable
Sold Separately (IP54)

Each Inceptor® Omni has the option to have either a fixed or adjustable bezel.

The Omni comes with the fixed bezel as standard and the adjustable bezel can be purchased separately.

Switchable Colour Temperature

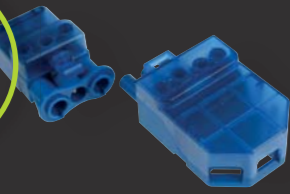
The Omni features a built-in three position switch which grants the ability to change the colour temperature instantly.

The Inceptor® Omni combines cutting-edge Chip-On-Board LED technology and a custom built multifaceted lens to deliver a quality of light comparable to traditional light sources such as halogen lamps.



Inceptor® Omni Construction

Pre wired
flow™
Connector



Optional Insulation Support

Adding the insulation support helps create an air space allowing heat to dissipate and reduce temperatures.

Compact Driver

The Inceptor® Omni's high powered compact driver has been designed to be as small as possible whilst still being suitable for installation in a fire rated ceiling.

65mm
Low Profile

Trademark Intumescent Strip

Our trademark blue strip of intumescent adds an extra barrier of protection against fire by expanding to fill the gap between the plasterboard and light fitting.

Improved Cooling

Our Patented, multi-functional heat sink not only channels heat away from the LED Chip, it also grants the unit's ability to adapt from fixed to adjustable.

Multiple Moisture Seals

Ensures that water does not enter ceiling void through or around the fitting and seals the unit making it suitable for kitchens and bathrooms.

Dual-phosphor Chip-On-Board

Our dual-phosphor COB architecture has been meticulously calibrated to deliver 3 crisply defined colour temperatures from a single-point light source.

Faceted Lens (Halogen Effect)

The custom-built, multifaceted lens gathers the natively broad beam of the COB LED and focuses the emitted light into a series of predefined beam angles to best replicate a traditional halogen lamp (at 2700K).

User-changeable Fixed & Adjustable Bezels

The Bezels for the Omni have a twist and lock feature and can be quickly and easily replaced as required. There is the choice of 3 different finishes in both fixed and adjustable options.

A closer look...

Flow™ Connector

Flow™ is CLICK® Scolmore's pre-wired connection system designed to speed up installation and allows even faster removal for testing and replacement of components.

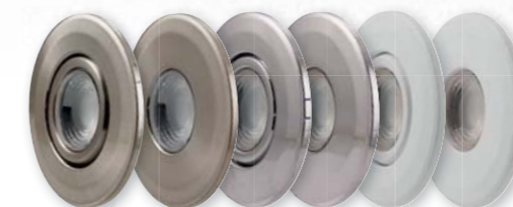
It also allows the quick and simple removal of the unit when carrying out routine maintenance or circuit testing, meaning testing procedures can be carried out quickly, accurately and effectively, with minimum disruption.

Insulation Support Bracket

The removable insulation support clip fixes directly onto the Omni. This means insulation is lifted away from the unit, maintaining a minimum air space and helping any generated heat to dissipate. Lowering the temperature around the fitting can extend the life of the unit.

User Changeable Bezel

The Bezels for the Omni have a twist and lock feature and can be quickly and easily replaced as required, without removing from the ceiling. There is the choice of 3 different finishes; Chrome, Satin Chrome and White, as well as fixed and adjustable options.

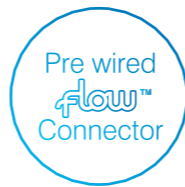




Features & Benefits

Product Range

Available in three finishes White, Chrome or Satin Chrome. Each Omni will be supplied with a fixed bezel in the desired finish. The adjustable bezel is available as an additional product, and can be supplied in each of the three finishes.



Omni is ideal for use in situations where moisture and low pressure water jets are a factor. This makes Omni an ideal solution for kitchens, bathrooms and wet rooms.

An integrated three position switch allows instant change of colour temperature. Without the insulation support bracket Omni only requires a **void height of 65mm.**



Satin Chrome Finish
Fixed Downlight: **LED4600SC7D**
Adjustable Bezel Only: **BZ4605SC**



Chrome Finish
Fixed Downlight: **LED4600CH7D**
Adjustable Bezel Only: **BZ4605CH**



White Finish
Fixed Downlight: **LED4600WH7D**
Adjustable Bezel Only: **BZ4605WH**

Features

- Integrated LED driver
- Flow™ Connector
- High Efficacy
- Compact Size; product will fit into a 65mm+ void depth
- Intumescent Collar
- Various finishes
- Choice of bezel
- Various colour temperatures / beam angles
- Adaptable cut-out
- Double Insulated
- Low-Energy
- Thermal protection
- Fire, Air-Flow and Acoustic Rated

Benefits

- Straight to mains
- One quick, easy connection
- Part-L compliant
- Easy install into shallow ceiling void
- Added Fire-Protection
- To suit any installation
- All combined within the same downlight due to the colour temperature switch
- Fits 65-70mm cut-out
- No Earth required
- Cost saving against traditional lamps
- Self-resetting if product overheats
- Building Regulations Compliant

Dimmable

65 -70mm Cut-out

5 Year Warranty (Registered)

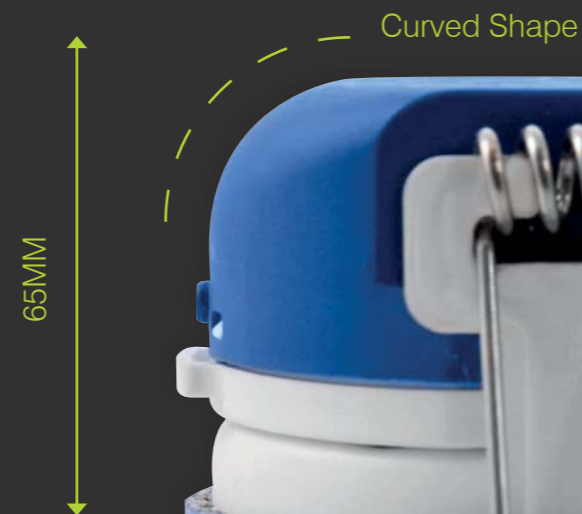
Fire-Rated

30 60 90 Minutes

Acoustic Air-Flow Moisture Compliant

65LM/W AVERAGE

PART L Compliant



Technical Information			
General Information		Standard Version	
Dimmable/Non Dimmable	Dimmable		
LED Colour Temperatures available	2700K (Warm)	4200K (Cool)	6500K (Daylight)
Finish Colours Available	White (WH), Chrome (CH) or Satin Chrome (SC)		
Adjustable Bezels Available	BZ4605CH (Chrome), BZ4605SC (Satin Chrome), BZ4605WH (White)		
Material composition	Steel, Aluminium, ABS, Nylon & Polycarbonate		
Cut Out	65-70mm (Fixed & Adjustable)		
Ceiling Thickness	5-40mm		
Ceiling Void depth	65mm+, 85mm+ (With Insulation Support Bracket)		
Dimensions Height	Height 65mm, 85mm (With Insulation Bracket), Diameter 85mm		
Warranty Registered:	Registered: 5 Years. Unregistered: 2 Years		
Weight	0.325Kg		
Light Output Information			
Output Wattage (approx)	5.6W		
CRI	>80		
LED Lifetime (L70)	(L70) 25,000 hours		
Total Luminous Flux (Useful)	500lm (430lm)	580lm (480lm)	550lm (450lm)
Beam Angle	40°	50°	65°
Total Luminous Efficacy (Effective)	71 lm/W (61 lm/W)	83 lm/W (69 lm/W)	79 lm/W (64 lm/W)
Power Factor	0.9		
Driver Information			
Connection	Pre-wired Flow™ Connector		
Input	220-240Vac / Rated 7W		
Output	160mA / 35V DC		
Switching Cycles	20,000		
Critical Temperature	80°C		
Part L1 Compliancy (as of 2014)	Yes		
Part L2 Compliancy (as of 2014)	Yes		
Regulation Ratings			
Fire Rating	30, 60 & 90 minute		
Ingress Protection Rating	IP65 (Zone 1), IP54 With Adjustable Bezel		
Acoustic Rating	0dB (zero impact on sound insulation)		
Air Flow	BS 5250: 20011 compliant (0.06M³/hr)		

Standards: BS EN 55015: 2006/+A1: 2007/+A2: 2009, BS EN 61547: 2009, BS EN 61000-3-2: 2006+A1: 2009+A2: 2009, BS EN 61000-3-3: 2008, BS EN 62493: 2010
For compatible dimmer switches please contact our technical department.

United Kingdom

Scolmore
GROUP

Scolmore Park, Landsberg,
Lichfield Road Industrial Estate,
Tamworth, Staffordshire
B79 7XB, United Kingdom

T: +44 (0)1827 63454

F: +44 (0)1827 63362

E: sales@scolmore.com

www.scolmore.com

Southern Ireland

CLICK Litehouse

18 Corrig Road,
Sandyford,
Dublin
D18 W79, Ireland

T: +353 (1) 2811 122

F: +353 (1) 2811 224

E: sales@clicklighthouse.ie

www.clicklighthouse.ie

OVIA[®]
LIGHTING BY CLICK