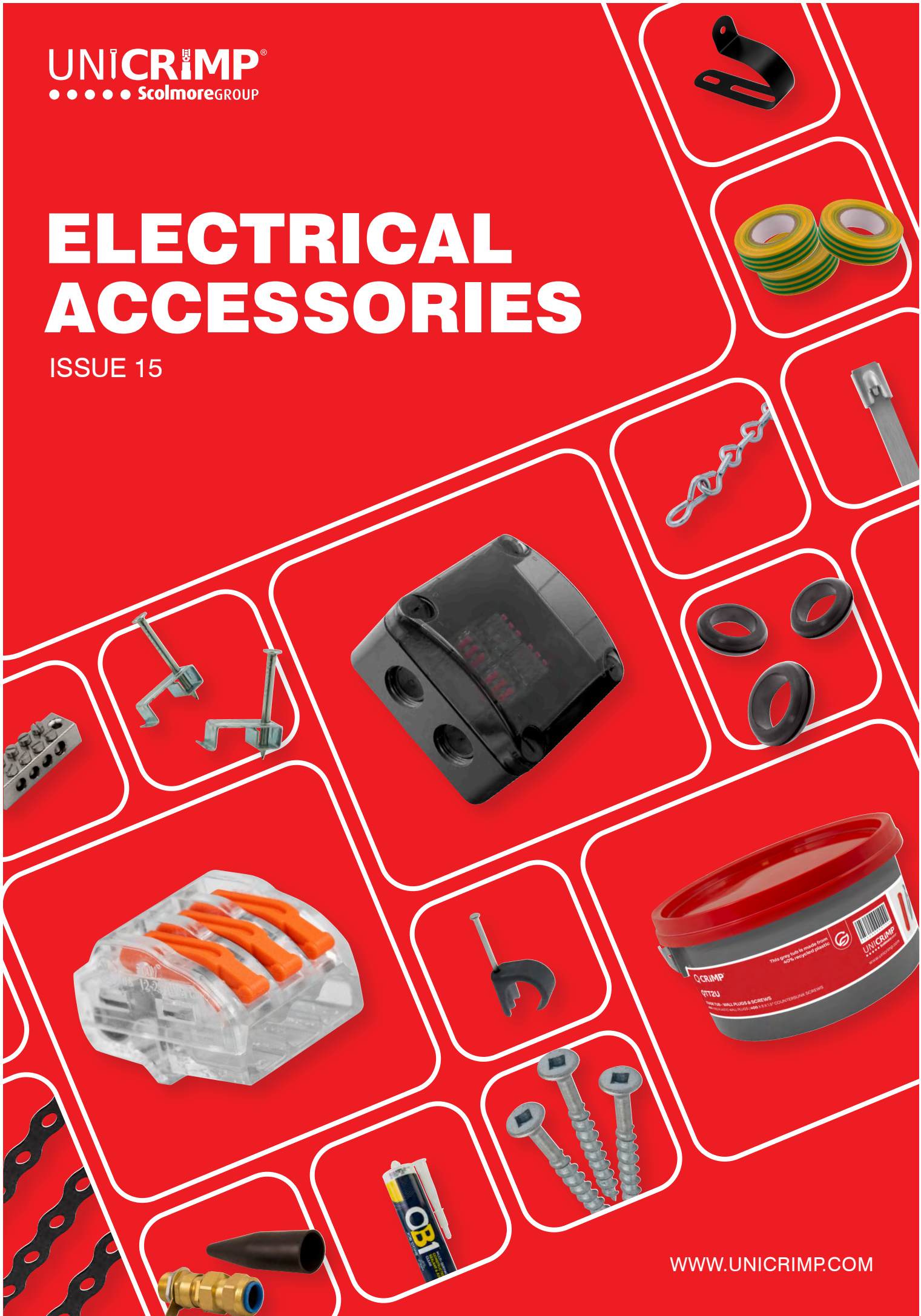


ELECTRICAL ACCESSORIES

ISSUE 15



Welcome to Unicrimp®

...a comprehensive range of electrical cable accessories.

Unicrimp® is part of the Scolmore® Group of companies. It brings to the electrical contracting industry a comprehensive range of electrical cable accessory products.

Launched under the Q-Crimp®, Q-Fire and Q-Nect brand names and available exclusively through the electrical wholesale trade, the product offering comprises an extensive range of cable management consumables.

All products from Unicrimp® are manufactured under stringent quality control systems and are fully compliant with the very latest industry regulations. The range includes cable ties, crimp terminals, PVC tape, copper tube terminals, cable clips, and brass and nylon glands – providing everything required to harness cable between the consumer unit and the end accessory.

Aligned with the core values of the Scolmore® group of companies, Unicrimp® will offer the same levels of outstanding customer service, high quality products and commitment to new product development.

Located at the Group Headquarters in the Midlands, the Unicrimp® distribution centre is ideally located to supply to all areas of the UK.

UNICRIMP®



call: 01827 300600 **email:** sales@unicrimp.com **visit:** www.unicrimp.com



Q-Fire Expanding Foam

Single component, flame resistant, B1 quality construction foam which cures by air moisture. It expands up to 30 times its original volume and is quick drying. Flame resistant only in between solid mineral or metal construction materials - gap depth and width a maximum of 40mm.



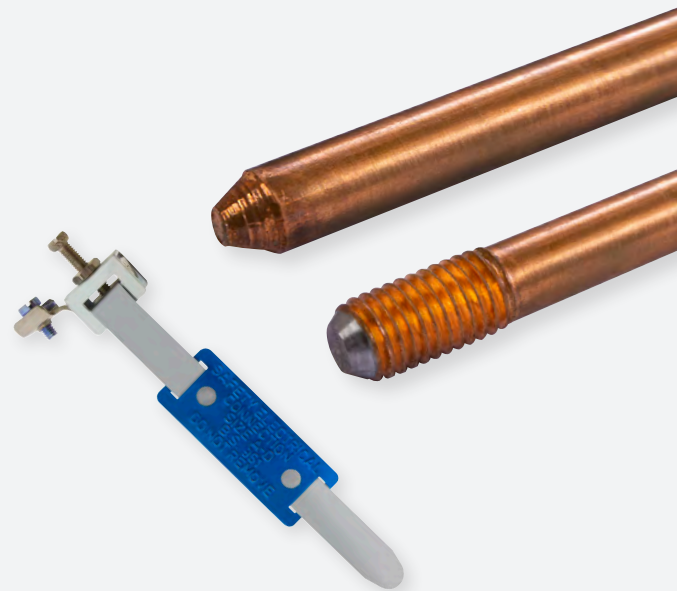
Lock Off Kits

Lock off kits are designed to prevent equipment usage at any given time. Ideal in locations where multiple workers are on-site.



PVC Tapes

Tested for: Thickness, Tensile Elongation, Adhesion, Adhesion to Backing, Flaggging, Corrosive Sulphur, Flame Propagation (CAT 2), Plastic to 31/90 (PVCP), Working Temperature up to 70°C.

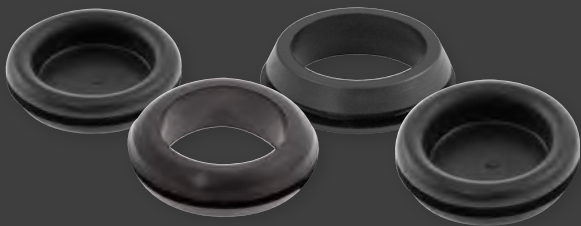


Earth Rods & Clamps

Unicrimp® earthing products meet British, European and International standards and all components are manufactured from high quality materials designed to ensure long lasting performance.

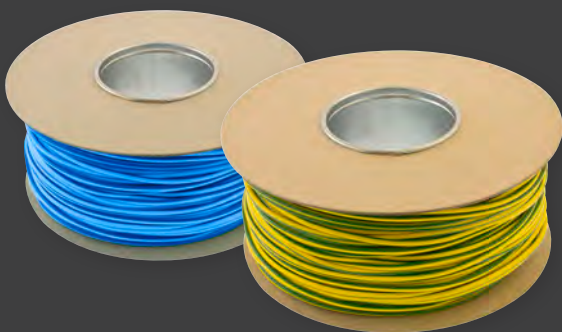
Grommets

A selection of open and closed grommets for use in terminating cable through, consumer units, back boxes and junction boxes to prevent damage to the insulation of the cable.



Sleeving

Cable sleeving is used to protect bare wires by providing an insulated layer that also identifies the cable based on the colour.



Grommet Strips

Grommet strip will protect your cable from sharp and abrasive edges. These can be fitted to reduce chafing, with an easy to apply fit that doesn't need adhesives for proper application.



Meter Tail Glands

Meter Tail Glands are designed to house incoming cables on a metal consumer unit and provide the ideal solution to house incoming cables requiring entry through a 32mm or 40mm knockout due to their specialist grommet allowing fitment for 25mm² or 16mm² meter tails.

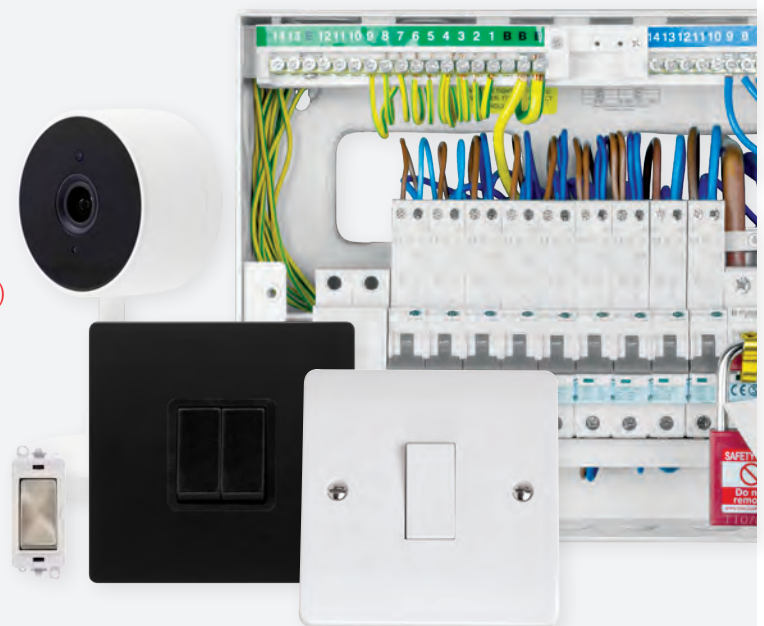
Do more with Scolmore Group

All of our products in the Q-Crimp, Q-Fire and Q-Nect ranges can be used when installing products from Scolmore Group. Choose from a great range of cable and wire accessories to help make your installations quicker, easier and safer.

CLiCK

ScolmoreGROUP

- Sleeving (See page 22)
- Nylon Glands (See page 28)
- Push In & Lever Connectors (See pages 30 - 31)
- Grommets (See page 34)
- Q-Fire Range (See pages 35 - 38)
- Countersunk Machine Screws (See page 44)
- Extension Stud (See page 41)
- Torque Driver (See page 58)





- Bootlace Ferrules (See page 14)
- Cable Ties (See pages 17 - 20)
- Warning Tape (See page 29)
- Cable Clips (See page 33)
- Q-Fire Range (See page 35 - 38)
- Fixings (See page 39 - 52)
- Catenary Wire & Accessories (See page 47)



- Bootlace Ferrules (See page 14)
- Nylon Glands (See page 28)
- PVC Tape (See page 29)
- Push In & Lever Connectors (See page 30 - 31)
- Terminal Blocks (See page 30)
- Q-Fire Range (See page 35 - 38)
- Catenary Wire & Accessories (See page 47)
- Jack Chain & Accessories (See page 47)





Q-NECT

Lever Connectors & Connection Boxes

Focusing on strong, quick and reliable solutions, the new Q-Nect range offers great versatility for electrical connections. Each product is packed with features which makes your installations quicker and easier.

- **Lever Connectors**
- **IP66 Junction Box**
- **2 & 3 Way Connectors**
- **3 Way IP68 'T' & Inline Connectors**



Earthing Products

Unicrimp's complete earthing system has a consistent design throughout the range, making it adaptable to meet the installers ever changing needs and simplify the overall installation.

Unicrimp® earthing products meet British, European and International standards and all components are manufactured from high quality materials designed to ensure long lasting performance even in the harshest soil conditions.





Q-FIRE

The Complete Fire Range

Don't get caught out by the latest regs! Prevent cables from premature collapse during a fire and keep emergency services and the public safe.

BS7671 IET Wiring Regulations 18th Edition, Chapter 52: Selection and erection of wiring systems, provides requirements for the methods of support of wiring systems in escape routes. Regulation 521.10.202 requires cables to be adequately supported against their premature collapse in the event of a fire. This applies throughout the installation and not just in escape routes.

- Metal Cable Cleats
- Stainless Steel Cable Ties
- Stainless Steel Mounts
- Fire Safe Cable Clips
- Metal Screws
- Saddle Clips & P Clips
- Saddle Bar Spacers
- All Round Banding
- Sealants & Expanding Foam



OB1 Range

User-friendly, hybrid polymer formulation for the ultimate in bonding and sealing. Contains no solvents so will never crack or shrink. Can be applied on wet surfaces, painted or moulded. Very high bond strength with resistance to fungal and bacterial growth.



11

Pre-Insulated Terminals

Rings, push-ons, spades, blades, butts, pins, heat shrink butts, bullets, available in red, blue & yellow.



15

Copper Tube Terminals

Available in a range of sizes with bell mouth cable entry.



21

Cable Tie Accessories

Eyelets, cradles, 2-way cable tie bases, mounts, earth sleeving.



23

Cable Glands

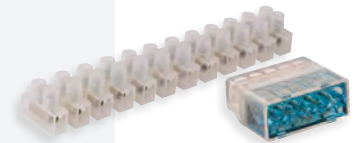
Industrial brass glands and IP68 nylon glands available in a range of sizes.



30

Connectors & Terminals

Push in connectors, lever connectors and terminal blocks.



33

Cable Clips

Available in a range of colours and sizes.



35

Q-Fire Range

A range of tested and approved fire rated clips, ties, mounts, fixings and expanding foam.



53

OB1 Sealant & Adhesive

Multi-surface construction sealant & adhesive available in 9 different colours. Also available are paint & varnish remover and multi-surface cleaner.



57

Earthing & Accessories

Earth rods, couplers, driving studs, clamps and inspection pits, earth clamps, torque driver set & lock off kits.





Bootlace Ferrules

Available in a range of sizes with bell mouth cable entry.

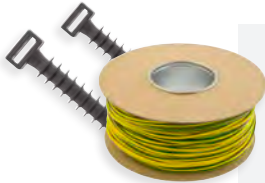
14



Cable Ties

Nylon and metal content cable ties available in a range of sizes and made to the highest of quality.

17



Plugs & Sleeving

Masonry fixings for cable ties. PVC sleeving & PVC heat shrink sleeving

22



Insulating Tapes

General purpose non-migratory plasticised insulation tape.

29



Q-Nect Range

Strong, quick and reliable solutions. Lever connectors and IP connection boxes.

31



Grommets & Cleats

Quick fit grommets and standard grommets, available in a range of sizes.

34



Fixings

Wall plugs, fixings, bolts, screws, toggles & nuts/washers.

39



Adhesives

Silicone adhesives, fillers and expanding foams.

55

Customer Support

Sales Office and in-house studio. All Unicrimp marketing material available to download.

59

Ring



Part Number	Stud Size (mm)	Pack Qty
QRR3	3	100
QRR37	3.7	100
QRR4	4	100
QRR5	5	100
QRR6	6	100
QRR8	8	100
QRR10	10	100
QRR12	12	100

Cable Size Range (mm): 0.5 to 1.5
Current Rating (A): 19(Max) Voltage (V): 600(Max)

Male Push-on



Part Number	Tab Size (mm)	Pack Qty
QRPO28M5	2.8 x 0.5	100
QRPO28M8	2.8 x 0.8	100
QRPO48M5	4.8 x 0.5	100
QRPO48M8	4.8 x 0.8	100
QRPO63M	6.3 x 0.8	100

Cable Size Range (mm): 0.5 to 1.5
Current Rating (A): 10(Max) Voltage (V): 600(Max)

Female Push-on



Part Number	Tab Size (mm)	Pack Qty
QRPO28F5	2.8 x 0.5	100
QRPO28F8	2.8 x 0.8	100
QRPO48F5	4.8 x 0.5	100
QRPO48F8	4.8 x 0.8	100
QRPO63F	6.3 x 0.8	100

Cable Size Range (mm): 0.5 to 1.5
Current Rating (A): 10(Max) Voltage (V): 600(Max)

Spade



Part Number	Stud Size (mm)	Pack Qty
QRF3	3	100
QRF3N	3.5	100
QRF4N	4	100
QRF5	5	100
QRF6	6	100

Cable Size Range (mm): 0.5 to 1.5
Current Rating (A): 19(Max) Voltage (V): 600(Max)

Female Push-on Fully Insulated



Part Number	Tab Size (mm)	Pack Qty
QRFPO28F5	2.8 x 0.5	100
QRFPO28F8	2.8 x 0.8	100
QRFPO48F5	4.8 x 0.5	100
QRFPO48F8	4.8 x 0.8	100
QRFPO63F	6.3 x 0.8	100

Cable Size Range (mm): 0.5 to 1.5
Current Rating (A): 10(Max) Voltage (V): 600(Max)

Blade



Part Number	Dia x Length (mm)	Pack Qty
QRBL10	2.3 x 10	100
QRBL14	2.3 x 14	100
QRBL18	2.3 x 18	100

Cable Size Range (mm): 0.5 to 1.5
Current Rating (A): 19(Max) Voltage (V): 600(Max)

Butt Splice



Part Number	Pack Qty
QRB	100

Cable Size Range (mm): 0.5 to 1.5
Current Rating (A): 10(Max) Voltage (V): 600(Max)

Piggy Back Push-on Connector



Part Number	Tab Size (mm)	Pack Qty
QRPOA63	6.3 x 0.8	100

Cable Size Range (mm): 0.5 to 1.5
Current Rating (A): 10(Max) Voltage (V): 600(Max)

Pin



Part Number	Dia x Length (mm)	Pack Qty
QRP12	1.9 x 12	100

Cable Size Range (mm): 0.5 to 1.5
Current Rating (A): 19(Max) Voltage (V): 600(Max)

Heat Shrink Butt



Part Number	Pack Qty
QHSB1	100

Cable Size Range (mm): 0.5 to 1.5
Current Rating (A): 19(Max) Voltage (V): 600(Max)

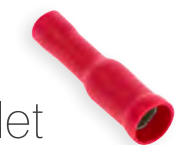
Male Bullet



Part Number	Bullet Dia (mm)	Pack Qty
QRAB4M	4	100

Cable Size Range (mm): 0.5 to 1.5
Current Rating (A): 10(Max) Voltage (V): 600(Max)

Female Bullet



Part Number	Bullet Dia (mm)	Pack Qty
QRAB4F	4	100

Cable Size Range (mm): 0.5 to 1.5
Current Rating (A): 10(Max) Voltage (V): 600(Max)

Ring



Part Number	Stud Size (mm)	Pack Qty
QBR3	3	100
QBR37	3.7	100
QBR4	4	100
QBR5	5	100
QBR6	6	100
QBR8	8	100
QBR10	10	100
QBR12	12	100

Cable Size Range (mm): 1.5 to 2.5
Current Rating (A): 24(Max) Voltage (V): 600(Max)

Male Push-on



Part Number	Tab Size (mm)	Pack Qty
QBPO48M5	4.8 x 0.5	100
QBPO48M8	4.8 x 0.8	100
QBPO63M	6.3 x 0.8	100

Cable Size Range (mm): 1.5 to 2.5
Current Rating (A): 15(Max) Voltage (V): 600(Max)

Female Push-on



Part Number	Tab Size (mm)	Pack Qty
QBPO48F5	4.8 x 0.5	100
QBPO48F8	4.8 x 0.8	100
QBPO63F	6.3 x 0.8	100
QBPO85F	8.5 x 0.8	100

Cable Size Range (mm): 1.5 to 2.5
Current Rating (A): 15(Max) Voltage (V): 600(Max)

Spade



Part Number	Stud Size (mm)	Pack Qty
QBF3	3	100
QBF3N	3.5	100
QBF4N	4	100
QBF5	5	100
QBF6	6	100

Cable Size Range (mm): 1.5 to 2.5
Current Rating (A): 24(Max) Voltage (V): 600(Max)

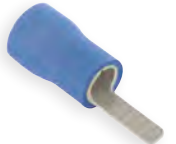
Female Push-on Fully Insulated



Part Number	Tab Size (mm)	Pack Qty
QBFPO48F5	4.8 x 0.5	100
QBFPO48F8	4.8 x 0.8	100
QBFPO63F	6.3 x 0.8	100

Cable Size Range (mm): 1.5 to 2.5
Current Rating (A): 15(Max) Voltage (V): 600(Max)

Blade



Part Number	Dia x Length (mm)	Pack Qty
QBBL9	2.8 x 9	100
QBBL18	2.2 x 18	100

Cable Size Range (mm): 1.5 to 2.5
Current Rating (A): 24(Max) Voltage (V): 600(Max)

Butt



Part Number	Pack Qty
QBB	100

Cable Size Range (mm): 1.5 to 2.5
Current Rating (A): 15(Max) Voltage (V): 600(Max)

Piggy Back Push-on Connector



Part Number	Tab Size (mm)	Pack Qty
QBPOA63	6.3 x 0.8	100

Cable Size Range (mm): 1.5 to 2.5
Current Rating (A): 15(Max) Voltage (V): 600(Max)

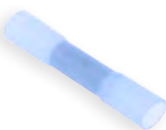
Pin



Part Number	Dia x Length (mm)	Pack Qty
QBP12	1.9 x 12	100

Cable Size Range (mm): 1.5 to 2.5
Current Rating (A): 27(Max) Voltage (V): 600(Max)

Heat Shrink Butt



Part Number	Pack Qty
QHSHB2	100

Cable Size Range (mm): 1.5 to 2.5
Current Rating (A): 27(Max) Voltage (V): 600(Max)

Male Bullet



Part Number	Bullet Dia (mm)	Pack Qty
QBAB4M	4	100
QBAB5M	5	100

Cable Size Range (mm): 1.5 to 2.5
Current Rating (A): 15(Max) Voltage (V): 600(Max)

Female Bullet



Part Number	Bullet Dia (mm)	Pack Qty
QBAB4F	4	100
QBAB5F	5	100

Cable Size Range (mm): 1.5 to 2.5
Current Rating (A): 15(Max) Voltage (V): 600(Max)

Ring



Part Number	Stud Size (mm)	Pack Qty
QYR4	4	100
QYR5	5	100
QYR6	6	100
QYR8	8	100
QYR10	10	100
QYR12	12	100

Cable Size Range (mm): 2.5 to 4
Current Rating (A): 37(Max) Voltage (V): 600(Max)

Male Push-on



Part Number	Tab Size (mm)	Pack Qty
QYPO63M	6.3 x 0.8	100

Cable Size Range (mm): 2.5 to 4
Current Rating (A): 24(Max) Voltage (V): 600(Max)

Female Push-on



Part Number	Tab Size mm	Pack Qty
QYPO63F	6.3 x 0.8	100
QYPO95F	9.4 x 1.2	100

Cable Size Range (mm): 2.5 to 4
Current Rating (A): 24(Max) Voltage (V): 600(Max)

Spade



Part Number	Stud Size (mm)	Pack Qty
QYF3N	3.5	100
QYF4N	4	100
QYF5	5	100
QYF6	6	100

Cable Size Range (mm): 2.5 to 4
Current Rating (A): 37(Max) Voltage (V): 600(Max)

Female Push-on Fully Insulated



Part Number	Tab Size mm	Pack Qty
QYFPO63F	6.3 x 0.8	100
QYFPO95F	9.4 x 1.2	100

Cable Size Range (mm): 2.5 to 4
Current Rating (A): 24(Max) Voltage (V): 600(Max)

Blade



Part Number	Dia x Length mm	Pack Qty
QYBL10	2.8 x 10	100
QYBL18	4.5 x 18	100

Cable Size Range (mm): 2.5 to 4
Current Rating (A): 37(Max) Voltage (V): 600(Max)

Butt



Part Number	Pack Qty
QYB	100

Cable Size Range (mm): 2.5 to 4
Current Rating (A): 24(Max) Voltage (V): 600(Max)

Piggy Back Push-on Connector



Part Number	Tab Size (mm)	Pack Qty
QYPOA63	6.3 x 0.8	100

Cable Size Range (mm): 2.5 to 4
Current Rating (A): 24(Max) Voltage (V): 600(Max)

Pin



Part Number	Dia x Length (mm)	Pack Qty
QYP14	2.9 x 14	100

Cable Size Range (mm): 2.5 to 4
Current Rating (A): 37(Max) Voltage (V): 600(Max)

Heat Shrink Butt



Part Number	Pack Qty
QH5B5	100

Cable Size Range (mm): 2.5 to 4
Current Rating (A): 37(Max) Voltage (V): 600(Max)

Male Bullet



Part Number	Bullet Dia mm	Pack Qty
QYAB5M	5	100

Cable Size Range (mm): 2.5 to 4
Current Rating (A): 24(Max) Voltage (V): 600(Max)

Female Bullet



Part Number	Bullet Dia mm	Pack Qty
QYAB5F	5	100

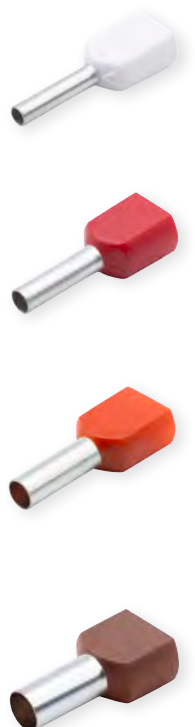
Cable Size Range (mm): 2.5 to 4
Current Rating (A): 24(Max) Voltage (V): 600(Max)

Bootlace Ferrule

Part Number	Description	Cable Size (mm ²)	Ferrule Length (mm)	Ferrule Diameter (mm)	Colour	Pack Quantity
QBFR05	Bootlace Ferrule Single 0.5mm	0.5	8	1.05	○ White	100
QBFR075	Bootlace Ferrule Single 0.75mm	0.75	8	1.25	● Blue	100
QBFR1	Bootlace Ferrule Single 1.0mm	1	8	1.45	● Red	100
QBFR15	Bootlace Ferrule Single 1.5mm	1.5	8	1.8	● Black	100
QBFR25	Bootlace Ferrule Single 2.5mm	2.5	8	2.3	● Grey	100
QBFR4	Bootlace Ferrule Single 4mm	4	10	2.9	● Orange	100
QBFR6	Bootlace Ferrule Single 6.0mm	6	12	3.6	● Green	100
QBFR10	Bootlace Ferrule Single 10mm	10	12	4.6	● Brown	100



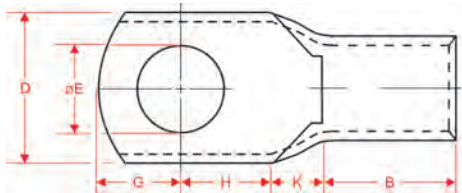
QDBFR05	Bootlace Ferrule Double 0.5mm	0.5	8	1.8	○ White	100
QDBFR075	Bootlace Ferrule Double 0.75mm	0.75	8	2.1	● Blue	100
QDBFR1	Bootlace Ferrule Double 1.0mm	1	8	2.3	● Red	100
QDBFR15	Bootlace Ferrule Double 1.5mm	1.5	8	2.6	● Black	100
QDBFR25	Bootlace Ferrule Double 2.5mm	2.5	10	3.3	● Grey	100
QDBFR4	Bootlace Ferrule Double 4mm	4	12	4.2	● Orange	100
QDBFR6	Bootlace Ferrule Double 6.0mm	6	14	5.3	● Green	100
QDBFR10	Bootlace Ferrule Double 10mm	10	14	6.9	● Brown	100



Copper Tube Terminals

Specification Requirements

- Finish: Electro tinned
- Copper conductivity to 97% IACS
- Copper tube double annealed
- All terminals up to 240mm² will have bell mouth cable entrance
- Working temperature up to 180°C (Standard)



Part Number	Cable Size (mm ²)	Stud Size (mm)	ØA (mm)	B (mm)	D (mm)	ØE (mm)	F (mm)	G (mm)	H (mm)	J (mm)	K (mm)	Pack Qty
QCT015-3	1.5	3	1.8	5	8	3.2	1	4	5	16	2	25
QCT015-4	1.5	4	1.8	5	8	4.2	1	4	5	16	2	25
QCT015-5	1.5	5	1.8	5	8	5.2	1	4	5	16	2	25
QCT025-3	2.5	3	2.4	5	8	3.2	1	4	7	18	2	25
QCT025-4	2.5	4	2.4	5	8	4.2	1	4	7	18	2	25
QCT025-5	2.5	5	2.4	6	10	5.2	0.8	4	7	20	2	25
QCT025-6	2.5	6	2.4	9	10	6.5	0.8	4	7	21.5	1.5	25
QCT04-6	4	6	3.1	6	4.8	6.5	1.1	5	7	20	2	25
QCT04-8	4	8	3.1	9	12	8.2	1	6	7	24	2	25
QCT04-10	4	10	3.1	11	15	10.2	0.8	8	7	28	2	25
QCT06-4	6	4	3.8	6	10	4.2	1.2	5	9	23	3	25
QCT06-5	6	5	3.8	6	10	5.2	1.2	5	9	23	3	25
QCT06-6	6	6	3.8	9	12	6.5	1	6	9	27	3	25
QCT06-8	6	8	3.8	9	12	8.4	1	6	9	27	3	25
QCT06-10	6	10	3.8	11	15	10.2	1	8	9	31	3	25
QCT10-5	10	5	4.5	5	8.7	5.2	1.42	4	12	24	3	10
QCT10-6	10	6	4.5	6	12	6.2	1.3	5	12	26	3	10
QCT10-8	10	8	4.5	9	12	8.4	1.03	6	12	30	3	10
QCT10-10	10	10	4.5	10	19	10.5	1.8	10	12	35	3	10
QCT10-12	10	12	4.5	12	19	13	1.8	12	12	39	3	10
QCT16-6	16	6	5.5	9	11	6.5	1.4	5	15	33	4	10
QCT16-8	16	8	5.5	9	11	8.4	1.31	6	15	34	4	10
QCT16-10	16	10	5.5	10	19	10.3	1.8	10	15	39	4	10
QCT16-12	16	12	5.5	12	19	13	1.8	12	15	43	4	10
QCT25-5	25	5	7	6	12.6	5.2	2	5	15	30	4	5
QCT25-6	25	6	7	6	12.6	6.5	2	5	15	30	4	5
QCT25-8	25	8	7	9	16	8.4	1.6	6	15	34	4	5
QCT25-10	25	10	7	10	17.5	10.5	1.5	10	15	39	4	5
QCT25-12	25	12	7	12	17.5	13	1.5	12	15	43	4	5
QCT35-6	35	6	8.6	8	15.7	6.4	2.2	8	18	39	5	5
QCT35-8	35	8	8.6	8	15.7	8.4	2.2	8	18	39	5	5
QCT35-10	35	10	8.6	11	16.2	10.5	2	9	18	43	5	5
QCT35-12	35	12	8.6	10.8	18	13	1.8	9.2	18	43	5	5
QCT50-6	50	6	9.6	8.5	17.4	6.4	2.4	8.5	23	46	6	5
QCT50-8	50	8	9.6	8.5	17.4	8.4	2.4	8.5	23	46	6	5
QCT50-10	50	10	9.6	10	17.4	10.5	2.4	10	23	49	6	5
QCT50-12	50	12	9.6	13	17.2	13	2.4	12	23	54	6	5

Part Number	Cable Size (mm ²)	Stud Size (mm)	ØA (mm)	B (mm)	D (mm)	ØE (mm)	F (mm)	G (mm)	H (mm)	J (mm)	K (mm)	Pack Qty
QCT70-6	70	6	11.2	13	22	6.5	3	11	23	53	6	5
QCT70-8	70	8	11.2	11	22	8.4	3	11	23	52	7	5
QCT70-10	70	10	11.2	11	21.5	10.5	3	11	23	52	7	5
QCT70-12	70	12	11.2	11	21.5	13	3	11	23	52	7	5
QCT70-14	70	14	11.2	12.5	25	15	3	12.5	23	55	7	5
QCT95-8	95	8	13.5	12	21.5	8.4	3.9	12	30	63	9	5
QCT95-10	95	10	13.5	12	25	10.5	3.9	12	30	63	9	5
QCT95-12	95	12	13.5	12	25	13	3.9	12	30	63	9	5
QCT95-14	95	14	13.5	14	28	4.7	3.9	14	30	67	9	5
QCT95-16	95	16	13.5	16	28	17	3.9	16	30	71	9	5
QCT120-8	120	8	15	12	27.5	8.4	3.9	12	25	59	10	5
QCT120-10	120	10	15	12	27.5	10.5	3.9	12	25	59	10	5
QCT120-12	120	12	15	12	27.5	13	3.9	12	25	59	10	5
QCT120-14	120	14	15	15	27.5	15	3.9	15	25	65	10	5
QCT120-16	120	16	15	15	27.5	17	3.9	15	25	65	10	5
QCT120-20	120	20	15	15	27.5	21	3.9	15	25	65	10	5
QCT150-8	150	8	16.5	14	30	8.4	4.38	14	26	65	11	5
QCT150-10	150	10	16.5	14	30	10.5	4.38	14	26	65	11	5
QCT150-12	150	12	16.5	14	30	13	4.38	14	26	65	11	5
QCT150-14	150	14	16.5	14	30	15	4.38	14	27	69	11	5
QCT150-16	150	16	16.5	16	30	17	4.38	16	27	77	11	5
QCT150-20	150	20	16.5	20	30	21	4.38	17	27	77	11	5
QCT185-10	185	10	19	14	34	10.5	4	14	30	68	12	5
QCT185-12	185	12	19	14	34	13	4	14	30	68	12	5
QCT185-14	185	14	19	14	34	15	4	14	30	68	12	5
QCT185-16	185	16	19	16	34	17	4	16	28	72	12	5
QCT185-20	185	20	19	18	34	21	4	18	28	76	12	5
QCT240-10	240	10	21	15	37.6	10.5	5	15	33	77	14	5
QCT240-12	240	12	21	15	37.6	13	5	15	33	77	14	5
QCT240-14	240	14	21	15	37.6	15	5	15	33	77	14	5
QCT240-16	240	16	21	19	37.6	17	5	19	33	85	14	5

Copper Tube Butt Splices



Part Number	Description	Length (mm)	Outer Diameter (mm)	Max Cable Dia. (mm ²)	Pack Qty
QB1-5	Copper Butt Splice Terminal 1.5mm ²	12	3.7	1.8	25
QB2-5	Copper Butt Splice Terminal 2.5mm ²	15	4	2.3	25
QB4-6	Copper Butt Splice Terminal 4-6mm ²	15	5.5	3.8	25
QB10	Copper Butt Splice Terminal 10mm ²	20	6	4.5	10
QB16	Copper Butt Splice Terminal 16mm ²	20	6.8	5.5	10
QB25	Copper Butt Splice Terminal 25mm ²	32	8.8	6.8	5
QB35	Copper Butt Splice Terminal 35mm ²	36	10.8	8.6	5
QB50	Copper Butt Splice Terminal 50mm ²	40	12	9.6	5
QB70	Copper Butt Splice Terminal 70mm ²	40	14.7	11.2	5
QB95	Copper Butt Splice Terminal 95mm ²	45	17.5	13.5	5
QB120	Copper Butt Splice Terminal 120mm ²	45	19	15	5
QB150	Copper Butt Splice Terminal 150mm ²	55	21	16.5	5
QB185	Copper Butt Splice Terminal 185mm ²	65	23.5	19	5
QB240	Copper Butt Splice Terminal 240mm ²	80	26	21	5

Note 1
Blank terminal palms are available from 10mm² to 240mm².

Note 2
When using flexible fine strand or welding cable it may be necessary to select the next larger terminal size, i.e. 70mm² fine strand, select 95mm² terminal.

Cable Ties    

Unicrimp® Cable Ties are produced on multi-impresion tools which mould complete one piece ties with no metal parts.

They are manufactured from tough durable Nylon 6/6 which has been tested to underwriters laboratory UL94V2. The material is zero halogenated and also has a low smoke and fume capability when compared with materials such as PVC, PP, PE, ABS, POM, ect.

The classified oxygen index at max 28% dry is considered excellent in halogen free and L.S.F. situations.

These specifications include for the performance testing requirements with regard to flammability, tensile strength, vibration, corrosion, etc., and in most cases exceed the recommendations. The ties can be tensioned by hand or by the use of applied tensioning tools.

The colour shade of the standard ties is natural nylon or black, but other colours are available to special order.

All general specification details are incorporated as indicated in Table 'A' and for any additional information please contact our offices.

Table A		Test Method
Material	Nylon 6/6	
Working Temperature Range	-40°C to 85°	
UL Flammability Rating	UL94	V2
Oxygen Index	25% - 28%	
Smoke Density	Flaming 35 Non Flaming 13	
Water Absorption (24 hours)	1.3%	

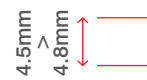
Loop Tensile Strength	(kgs)
Miniature	8.1kgs
Intermediate	18.2kgs
Standard	22.2kgs
Light Heavy	54.5kgs
Heavy	79.4kgs
Extra Heavy	113.5kgs



Miniature Range

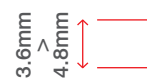
Part Number	Colour	Length (mm)	Width (mm)	Bundle Dia. (mm)	Min. Strength (Kg)	Pack Qty
QT80M	○ Natural	80	2.5	2 - 14	8.1	100
QTB80M	● Black	80	2.5	2 - 14	8.1	100
QT100M	○ Natural	100	2.5	3 - 20	8.1	100
QTB100M	● Black	100	2.5	3 - 20	8.1	100
QTBL100M	● Blue	100	2.5	3 - 20	8.1	100
QTG100M	● Green	100	2.5	3 - 20	8.1	100
QTR100M	● Red	100	2.5	3 - 20	8.1	100
QTY100M	● Yellow	100	2.5	3 - 20	8.1	100
QT120M	○ Natural	120	2.5	3 - 25	8.1	100
QTB120M	● Black	120	2.5	3 - 25	8.1	100
QT165M	○ Natural	165	2.5	4 - 39	8.1	100
QTB165M	● Black	165	2.5	4 - 39	8.1	100
QT200M	○ Natural	200	2.5	4 - 50	8.1	100
QTB200M	● Black	200	2.5	4 - 50	8.1	100

Standard Range



Part Number	Colour	Length (mm)	Width (mm)	Bundle Dia. (mm)	Min. Strength (Kg)	Pack Qty
QT120S	○ Natural	120	4.8	6 - 24	22.2	100
QTB120S	● Black	120	4.8	6 - 24	22.2	100
QT160S	○ Natural	160	4.8	5 - 35	22.2	100
QTB160S	● Black	160	4.8	5 - 35	22.2	100
QT190S	○ Natural	190	4.8	4 - 45	22.2	100
QTB190S	● Black	190	4.8	4 - 45	22.2	100
QT200S	○ Natural	200	4.8	5 - 47	22.2	100
QTB200S	● Black	200	4.8	5 - 47	22.2	100
QTBL200S	● Blue	200	4.8	5 - 47	22.2	100
QTG200S	● Green	200	4.8	5 - 47	22.2	100
QTR200S	● Red	200	4.8	5 - 47	22.2	100
QTY200S	● Yellow	200	4.8	5 - 47	22.2	100
QT250S	○ Natural	250	4.8	5 - 62	22.2	100
QTB250S	● Black	250	4.8	5 - 62	22.2	100
QT300S	○ Natural	300	4.8	7 - 76	22.2	100
QTB300S	● Black	300	4.8	7 - 76	22.2	100
QTBL300S	● Blue	300	4.8	7 - 76	22.2	100
QTG300S	● Green	300	4.8	7 - 76	22.2	100
QTR300S	● Red	300	4.8	7 - 76	22.2	100
QTS300S	● Silver	300	4.8	7 - 76	22.2	100
QTY300S	● Yellow	300	4.8	7 - 76	22.2	100
QT370S	○ Natural	370	4.8	7 - 96	22.2	100
QTB370S	● Black	370	4.8	7 - 96	22.2	100
QTBL370S	● Blue	370	4.8	7 - 96	22.2	100
QTG370S	● Green	370	4.8	7 - 96	22.2	100
QTR370S	● Red	370	4.8	7 - 96	22.2	100
QTS370S	● Silver	370	4.8	7 - 96	22.2	100
QTY370S	● Yellow	370	4.8	7 - 96	22.2	100
QT430S	○ Natural	430	4.8	7 - 115	22.2	100
QTB430S	● Black	430	4.8	7 - 115	22.2	100

Metal Content Range



Part Number	Colour	Length (mm)	Width (mm)	Bundle Dia. (mm)	Min. Strength (Kg)	Pack Qty
QMCTBL150I	● Blue	150	3.6	3 - 33	11	100
QMCTBL200S	● Blue	200	4.6	5 - 47	15	100
QMCTBL280S	● Blue	280	4.8	7 - 70	15	100
QMCTBL385S	● Blue	385	4.8	7 - 101	15	100



Intermediate Range

Part Number	Colour	Length (mm)	Width (mm)	Bundle Dia. (mm)	Min. Strength (Kg)	Pack Qty
QT150I	○ Natural	150	3.6	3 - 33	18.2	100
QTB150I	● Black	150	3.6	3 - 33	18.2	100
QTY150I	● Yellow	150	3.6	3 - 33	18.2	100
QTBL150I	● Blue	150	3.6	3 - 33	18.2	100
QTG150I	● Green	150	3.6	3 - 33	18.2	100
QTR150I	● Red	150	3.6	3 - 33	18.2	100
QT200I	○ Natural	200	3.6	5 - 47	18.2	100
QTB200I	● Black	200	3.6	5 - 47	18.2	100
QT290I	○ Natural	290	3.6	7 - 75	18.2	100
QTB290I	● Black	290	3.6	7 - 75	18.2	100
QT370I	○ Natural	370	3.6	7 - 96	18.2	100
QTB370I	● Black	370	3.6	7 - 96	18.2	100

Extra Wide Ties

The Unicrimp® range of heavy duty cable ties are designed for applications that require combined high strength fixing and a positive locking capability. They are particularly suitable in difficult situations frequently found in Petro Chemical or Marine Industries.

They are available in two colours, natural or black. See Table A (page 17) for full specification of nylon material.



Light Heavy Range

Part Number	Colour	Length (mm)	Width (mm)	Bundle Dia. (mm)	Min. Strength (Kg)	Pack Qty
QT150LH	○ Natural	150	7.6	5 - 29	54.5	100
QTB150LH	● Black	150	7.6	5 - 29	54.5	100
QT200LH	○ Natural	200	7.6	7 - 47	54.5	100
QTB200LH	● Black	200	7.6	7 - 47	54.5	100
QT300LH	○ Natural	300	7.6	8 - 73	54.5	100
QTB300LH	● Black	300	7.6	8 - 73	54.5	100
QT370LH	○ Natural	370	7.6	8 - 94	54.5	100
QTB370LH	● Black	370	7.6	8 - 94	54.5	100

Heavy Range



Part Number	Colour	Length (mm)	Width (mm)	Bundle Dia. (mm)	Min. Strength (Kg)	Pack Qty
QT450H	○ Natural	450	8	11 - 117	62	100
QTB450H	● Black	450	8	11 - 117	62	100
QT550H	○ Natural	550	8	15 - 147	62	100
QTB550H	● Black	550	8	15 - 147	62	100
QT760H	○ Natural	760	9	12 - 208	79.4	100
QTB760H	● Black	760	9	12 - 208	79.4	100
QT810H	○ Natural	810	9	12 - 223	79.4	100
QTB810H	● Black	810	9	12 - 223	79.4	100

Extra Heavy Range



Part Number	Colour	Length (mm)	Width (mm)	Bundle Dia. (mm)	Min. Strength (Kg)	Pack Qty
QT230XH	○ Natural	230	12.7	15 - 53	113.5	100
QTB230XH	● Black	230	12.7	15 - 53	113.5	100
QT280XH	○ Natural	280	12.7	15 - 67	113.5	100
QTB280XH	● Black	280	12.7	15 - 67	113.5	100
QT380XH	○ Natural	380	12.7	15 - 96	113.5	100
QTB380XH	● Black	380	12.7	15 - 96	113.5	100
QT480XH	○ Natural	480	12.7	15 - 126	113.5	100
QTB480XH	● Black	480	12.7	15 - 126	113.5	100
QT550XH	○ Natural	550	12.7	12 - 146	113.5	100
QTB550XH	● Black	550	12.7	12 - 146	113.5	100
QT730XH	○ Natural	730	12.7	15 - 214	113.5	100
QTB730XH	● Black	730	12.7	15 - 214	113.5	100
QT880XH	○ Natural	880	12.7	15 - 242	113.5	100
QTB880XH	● Black	880	12.7	15 - 242	113.5	100
QT1030XH	○ Natural	1030	12.7	15 - 285	113.5	100
QTB1030XH	● Black	1030	12.7	15 - 285	113.5	100

Releasable Ties



Releasable cable ties, designed to facilitate routine changes and repairs. Press tab for easy removal. Mountable head cable ties used to secure bundled harnesses to panels. They may also be pre mounted to existing installation before final assembly.

See 'Table A' on page 17 for full specification of nylon material.

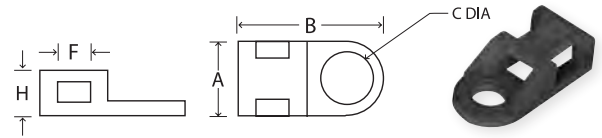


Part Number	Colour	Length (mm)	Width (mm)	Bundle Dia. (mm)	Min. Strength (Kg)	Pack Qty
QT200RE	○ Natural	200	4.8	4 - 50	22.2	100
QTB200RE	● Black	200	4.8	5 - 50	22.2	100
QT300RE	○ Natural	300	4.8	7 - 83	22.2	100
QTB300RE	● Black	300	4.8	7 - 83	22.2	100
QT370RE	○ Natural	370	4.8	7 - 96	22.2	100
QTB370RE	● Black	370	4.8	7 - 96	22.2	100

Accessories

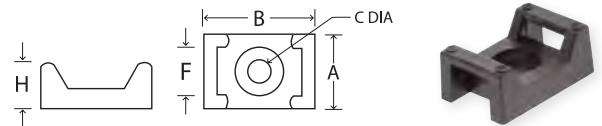
Unicrimp® accessories are designed to incorporate the majority of features applicable to the positioning of cable ties. Self adhesive bases, cradles, eyelets and clamps are supplied and manufactured from A.B.S. or Nylon 6/6 material. In case of self adhesive components the adhesive pads themselves have a base synthetic rubber foundation which when applied gives a high permanent bond to most surfaces. On all applications a dual option of bolt fixings is designed into the base as a preference if required.

Eyelets



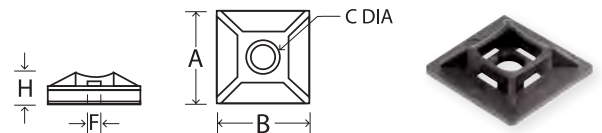
Part Number	Colour	A (mm)	B (mm)	C (mm)	H (mm)	F - Cable Tie Max Width (mm)	Pack Qty
QTE	○ Natural	9.5	19	4.3	5	5	100
QTBE	● Black	9.5	19	4.3	5	5	100

Cradles



Part Number	Colour	A (mm)	B (mm)	C (mm)	H (mm)	F - Cable Tie Max Width (mm)	Pack Qty
QTC	○ Natural	16	23	5	9.8	9	100
QTBC	● Black	16	23	5	9.8	9	100

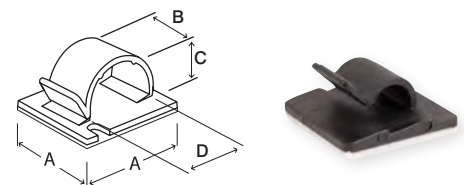
2 Way Cable Tie Base



Part Number	Colour	A (mm)	B (mm)	C (mm)	H (mm)	F - Cable Tie Max Width (mm)	Pack Qty
QTB12	○ Natural	18.9	18.9	4.8	4.6	4.2	100
QTB22	○ Natural	26.3	26.3	5	6	5.6	100
QTBB12	● Black	18.9	18.9	4.8	4.6	4.2	100
QTBB22	● Black	26.3	26.3	5	6	5.6	100

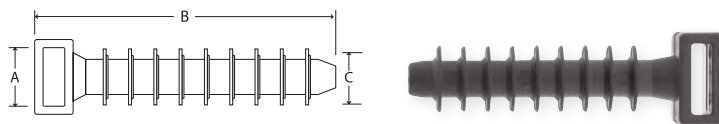
Mounts

- Designed for heavy duty harnessing applications
- Self adhesive
- Provides fast, strong mounting system for securing cables



Part Number	Colour	A (mm)	B (mm)	C (mm)	D (mm)	Pack Qty
QTM5	○ Natural	19	10.4	4.9	4.9	100
QTM11	○ Natural	26.8	12.3	8.3	11	100
QTM17	○ Natural	25.5	15.8	13.3	17	100
QTMB5	● Black	19	10.4	4.9	4.9	100
QTMB11	● Black	26.8	12.3	8.3	11	100
QTMB17	● Black	25.5	15.8	13.3	17	100

Wall Plug Mount



Part Number	Description	A	B	C (Drill Dia.)	Pack Qty
QMM9	Wall Plugs Mounts Masonry Fixings For Cable Ties	9.4	41.8	8.5	100

Heat Shrink



Part Number	Description	Inner Diameter (mm)	Length (mm)	Pack Qty
QHS4MP225	Multi-Colour Heat Shrink Pack 4.8mm X 225mm	4.8	225	1
QHS6MP225	Multi-Colour Heat Shrink Pack 6.4mm X 225mm	6.4	225	1
QHS9MP225	Multi-Colour Heat Shrink Pack 9.5mm X 225mm	9.5	225	1
QHS12MP225	Multi-Colour Heat Shrink Pack 12.7mm X 225mm	12.7	225	1
QHS19MP225	Multi-Colour Heat Shrink Pack 19.1mm X 225mm	19.1	225	1

Sleeving



Service Temperature Range: -25°C - +70°C. Flammability: Self extinguishing in 30 seconds.

Part Number	Description	Inner Diameter (mm)	Colour	Pack Qty
QES2	PVC Sleeving 2mm x 100m	2	Green/Yellow	1
QES2BL	PVC Sleeving 2mm x 100m	2	Blue	1
QES2BR	PVC Sleeving 2mm x 100m	2	Brown	1
QES3	PVC Sleeving 3mm x 100m	3	Green/Yellow	1
QES3BL	PVC Sleeving 3mm x 100m	3	Blue	1
QES3BR	PVC Sleeving 3mm x 100m	3	Brown	1
QES4	PVC Sleeving 4mm x 100m	4	Green/Yellow	1
QES4BL	PVC Sleeving 4mm x 100m	4	Blue	1
QES4BR	PVC Sleeving 4mm x 100m	4	Brown	1
QES5	PVC Sleeving 5mm x 100m	5	Green/Yellow	1

CXT Cable Gland Size Chart - CY Cable

Part Number	Cable Size (mm ²)	NOM Dia. (mm)	Number of Cores
20S	0.5	7.1	2
20S	0.5	7.6	3
20S	0.5	8	4
20S	0.5	8.5	5
20S	0.5	9.3	7
20	0.5	11.5	12
20	0.5	13.4	18
25	0.5	15.8	25
20S	0.75	7.6	2
20S	0.75	7.8	3
20S	0.75	8.3	4
20S	0.75	8.9	5
20S	0.75	9.7	7
20	0.75	12.2	12
25	0.75	13.6	18
25	0.75	16.7	25
20S	1.0	8.2	2
20S	1.0	8.4	3
20S	1.0	8.8	4
20S	1.0	9.3	5
20S	1.0	9.9	7
20	1.0	12.5	12
25	1.0	14.5	18
25	1.0	17.9	25
20S	1.5	8.5	2
20S	1.5	8.7	3
20S	1.5	9.3	4
20S	1.5	9.9	5
20	1.5	12.4	7
25	1.5	13.7	12
25	1.5	16.8	18
32	1.5	19.8	25
20S	2.5	9.8	2
20S	2.5	10.1	3

Part Number	Cable Size (mm ²)	NOM Dia. (mm)	Number of Cores
20S	2.5	10.9	4
20	2.5	11.8	5
20	2.5	13	7
25	2.5	17.3	12
32	2.5	19.8	18
20	4.0	11.7	3
20	4.0	12.6	4
25	4.0	13.9	5
25	4.0	15.7	7
25	6.0	14.1	3
25	6.0	14.8	4
25	6.0	16.9	5
25	6.0	18.4	7
25	10	18.2	4
32	10	19.8	5
32	10	22.2	7
32	16	21.8	4
32	16	23.5	5
32	25	25.3	4
40	25	28.9	5
40	35	29.7	4
50	50	34.9	4

Due to cable diameter variances between manufacturers, we strongly advise the cable diameter is checked where possible, prior to purchasing the products.

CXT Cable Gland Size Chart - SY Cable

Part Number	Cable Size (mm ²)	NOM Dia. (mm)	Number of Cores
20S	0.5	7.4	3
20S	0.5	7.9	4
20S	0.5	8.6	5
20S	0.5	9.2	7
20	0.5	11.6	12
20	0.5	13.4	18
25	0.5	15.5	25
20S	0.75	7.2	2
20S	0.75	7.7	3
20S	0.75	8.3	4
20S	0.75	8.9	5
20S	0.75	9.7	7
20	0.75	12.1	12
25	0.75	15.3	18
25	0.75	16.8	25
20S	1.0	7.6	2
20S	1.0	8.1	3
20S	1.0	8.6	4
20S	1.0	9.7	5
20S	1.0	10.5	7
20	1.0	13.4	12
25	1.0	15.6	18
25	1.0	18.1	25

Part Number	Cable Size (mm ²)	NOM Dia. (mm)	Number of Cores
20S	1.5	8.6	2
20S	1.5	9.1	3
20S	1.5	10.1	4
20S	1.5	10.6	5
20	1.5	11.5	7
25	1.5	15.1	12
25	1.5	17.4	18
20S	2.5	10.4	3
20	2.5	11.3	4
20	2.5	12.9	5
25	2.5	13.9	7
25	4.0	13.5	4
25	4.0	14.8	5
25	6.0	15.9	4
25	6.0	17.4	5
32	10	19.1	4
32	10	22.6	5
32	16	22.3	4
50	25	32.5	4
50	35	35.6	4
50	50	38.7	4
50	70	43.8	4

Due to cable diameter variances between manufacturers, we strongly advise the cable diameter is checked where possible, prior to purchasing the products.

CXT Brass Glands

- Tested and approved to BS6121 Pt1
- Supplied in kit form with shrouds, earth tags & steel locknuts
- Suitable for use with all types of screened flexible wire braid/wire braid armoured cables
- Ingress Protection: IP66



Part Number	Description	Gland Size (mm)	Thread Length (mm)	Max Outer Cable Dia. (mm)	Max Inner Cable Dia. (mm)	Armour Wire Dia. (mm)	Pack Qty
QCXT20S	CXT Brass Gland Pack 20mm Small	20	10	11.5	8	0.15/0.35	2
QCXT20	CXT Brass Gland Pack 20mm	20	10	13.5	11	0.15/0.50	2
QCXT25	CXT Brass Gland Pack 25mm	25	10	19.5	16	0.15/0.50	2
QCXT32	CXT Brass Gland Pack 32mm	32	10	19.5	16	0.15/0.55	2
QCXT40	CXT Brass Gland Pack 40mm	40	15	29	23	0.20/0.60	1
QCXT50	CXT Brass Gland Pack 50mm	50	15	37	31.5	0.30/0.80	1
QCXT63	CXT Brass Gland Pack 63mm	63	15	50	42.5	0.30/0.80	1

Cable Gland Selection Chart

The gland sizes recommended in this chart are for guidance only and are based on cables manufactured to BS 5467. Actual cable dimensions must be used for gland selection.

Cable Size	Single Core	2 Core	3 Core	4 Core	Number Of Cores								
					5	7	10	12	19	27	37	48	
1.5	-	20S	20S	20S	20S	20	20	20	25	25	32	32	32
2.5	-	20S	20S	20S	20	20	20	25	25	25	32	40	40
4.0	-	20S	20S	20	20	20	20	25	25	32	40	40	50
6.0	-	20	20	20	20								
10.0	-	20	20	25	25								
16.0	-	25	25	25	25								
25.0	-	25	32	32	32								
35.0	-	32	32	32	40								
50.0	20	25	32	32	50								
70.0	20	32	32	40	50								
95.0	25	32	40	50S									
120	25	40	50S	50									
150	32	40	50S	50									
185	32	50S	50	63S									
240	32	50	63S	63									
300	40	63S	63	75S									
400	40	63S	75S	75									

Due to cable diameter variances between manufacturers, we strongly advise the cable diameter is checked where possible, prior to purchasing the products.

E1W Industrial Brass Glands

- Tested and approved to BS 6121 Pt1
- Supplied in kit form with Shrouds, Earth Tags & Steel Locknuts



Part Number	Description	Gland Size (mm)	Thread Length (mm)	Max Outer Cable Dia. (mm)	Max Inner Cable Dia. (mm)	Armour Wire Dia. (mm)	Pack Qty
QAE1W20S	E1W Brass Gland Pack 20mm Small	20	10	11.6	11.4/15.9	0.9/1.25	2
QAE1W20	E1W Brass Gland Pack 20mm	20	10	13.9	15/20.9	0.9/1.25	2
QAE1W25	E1W Brass Gland Pack 25mm	25	10	19.9	20.3/27.4	1.25/1.6	2
QAE1W32	E1W Brass Gland Pack 32mm	32	10	26.2	26/33.9	1.6/2	2

2 Part BW Industrial Brass Glands



- Tested and approved to BS6121 Pt1
- Manufactured in cast brass to BS2874
- Supplied in kit form with Shrouds, Earth Tags & Steel Locknuts
- Standard 1.5mm Thread Pitch

Part Number	Description	Gland Size (mm)	Thread Length (mm)	Max Outer Cable Dia. (mm)	Max Inner Cable Dia. (mm)	Armour Wire Dia.(mm)	Pack Qty
QBW20S	BW Brass Gland Pack 20mm Small	20	10	16.1	11.6	0.9/1.25	2
QBW20	BW Brass Gland Pack 20mm	20	10	21.1	13.9	0.9/1.25	2
QBW25	BW Brass Gland Pack 25mm	25	10	27.4	19.9	1.25/1.6	2
QBW32	BW Brass Gland Pack 32mm	32	10	34.4	26.2	1.6/2.0	2
QBW40	BW Brass Gland Pack 40mm	40	15	42.4	32.1	1.6/2.0	1
QBW50S	BW Brass Gland Pack 50mm Small	50	15	50.1	38.1	2.0/2.5	1
QBW50	BW Brass Gland Pack 50mm	50	15	55.7	44	2.0/2.5	1
QBW63S	BW Brass Gland Pack 63mm Small	63	15	62.4	50	2.5	1
QBW63	BW Brass Gland Pack 63mm	63	15	68.2	55.9	2.5	1
QBW20S-LSF	BW Brass Gland LSF Pack 20mm Small	20	10	16.1	11.6	0.9/1.25	2
QBW20-LSF	BW Brass Gland LSF Pack 20mm	20	10	21.1	13.9	0.9/1.25	2
QBW25-LSF	BW Brass Gland LSF Pack 25mm	25	10	27.4	19.9	1.25/1.6	2
QBW32-LSF	BW Brass Gland LSF Pack 32mm	32	10	34.4	26.2	1.6/2.0	2
QBW40-LSF	BW Brass Gland LSF Pack 40mm	40	15	42.4	32.1	1.6/2.0	1
QBW50-LSF	BW Brass Gland LSF Pack 50mm	50	15	55.7	44	2.0/2.5	1
QBW63-LSF	BW Brass Gland LSF Pack 63mm	63	15	68.2	55.9	2.5	1

3 Part BW Industrial Brass Glands



- Tested and approved to BS6121 Pt1
- Manufactured in cast brass to BS2874

Part Number	Description	Gland Size (mm)	Max Inner Cable Dia. (mm)	Max Outer Cable Dia. (mm)	Armour Wire Dia. (mm)	Pack Qty
QBW20SS	BW Brass Gland Pack 20mm S/Small	20	9	13.5	0.9	2
QBW20S-3	BW Brass Gland Pack 20mm Small	20	12.5	16.5	0.9/1.25	2
QBW20-3	BW Brass Gland Pack 20mm	20	14.5	20.5	0.9/1.25	2
QBW25-3	BW Brass Gland Pack 25mm	25	20	26.5	1.25/1.6	2
QBW32-3	BW Brass Gland Pack 32mm	32	26.3	33.5	1.6/2	2
QBW40-3	BW Brass Gland Pack 40mm	40	33	41.5	1.6/2	1

3 Part CW Industrial Brass Glands



- Tested and approved to BS6121 Pt1
- Manufactured in cast brass to BS2874
- Supplied with Shrouds, Earth Tags & Steel Locknuts
- Standard 1.5mm Thread Pitch

PLEASE REFER TO PAGE 25 FOR THE CABLE GLAND SELECTION CHART

Part Number	Description	Gland Size (mm)	Thread Length (mm)	Max Outer Cable Dia. (mm)	Max Inner Cable Dia. (mm)	Armour Wire Dia.(mm)	Pack Qty
QCW20S	CW Brass Gland Pack 20mm Small	20	10	11.4/15.9	11.6	0.9/1.25	2
QCW20	CW Brass Gland Pack 20mm	20	10	15/20.9	13.9	0.9/1.25	2
QCW25	CW Brass Gland Pack 25mm	25	10	20.3/27.4	19.9	1.25/1.6	2
QCW32	CW Brass Gland Pack 32mm	32	10	26/33.9	26.2	1.6/2	2
QCW40	CW Brass Gland Pack 40mm	40	15	31/40.4	32.1	1.6/2	1
QCW50S	CW Brass Gland Pack 50mm Small	50	15	36.5/46.7	38.1	2/2.5	1
QCW50	CW Brass Gland Pack 50mm	50	15	43/53.1	44	2/2.5	1
QCW63S	CW Brass Gland Pack 63mm Small	63	15	48.9/59.4	50	2.5	1
QCW63	CW Brass Gland Pack 63mm	63	15	58/65.9	55.9	2.5	1
QCW75S	CW Brass Gland Pack 75mm Small	75	15	60.6/72.1	61.9	2.5	1
QCW75	CW Brass Gland Pack 75mm	75	15	64.9/78.5	67.9	2.5/3	1
QCW20S-LSF	CW Brass Gland LSF Pack 20mm Small	20	10	11.4/15.9	11.6	0.9/1.25	2
QCW20-LSF	CW Brass Gland LSF Pack 20mm	20	10	15/20.9	13.9	0.9/1.25	2
QCW25-LSF	CW Brass Gland LSF Pack 25mm	25	10	20.3/27.4	19.9	1.25/1.6	2
QCW32-LSF	CW Brass Gland LSF Pack 32mm	32	10	26/33.9	26.2	1.6/2	2
QCW40-LSF	CW Brass Gland LSF Pack 40mm	40	15	31/40.4	32.1	1.6/2	1
QCW50-LSF	CW Brass Gland LSF Pack 50mm	50	15	43/53.1	44	2/2.5	1
QCW63-LSF	CW Brass Gland LSF Pack 63mm	63	15	58/65.9	55.9	2.5	1

4 Part CW Industrial Brass Glands



- Tested and approved to BS6121 Pt1
- Manufactured in cast brass to BS2874
- Allows for slight variance in cable size

Part Number	Description	Gland Size (mm)	Max Inner Cable Dia. (mm)	Max Outer Cable Dia. (mm)	Armour Wire Dia. (mm)	Pack Qty
QCW20SS	CW Brass Gland Pack 20mm S/Small	20	9	12.5	0.9	2
QCW20S-4	CW Brass Gland Pack 20mm Small	20	12.5	15.5	0.9/1.25	2
QCW20-4	CW Brass Gland Pack 20mm	20	14	20.5	0.9/1.25	2
QCW25-4	CW Brass Gland Pack 25mm	25	20	26.5	1.25/1.6	2
QCW32-4	CW Brass Gland Pack 32mm	32	26.3	33.5	1.6/2	2
QCW40-4	CW Brass Gland Pack 40mm	40	33	40	1.6/2	1

Meter Tail Glands



Part Number	Description	Thread Diameter (mm)	Entry Thread (mm)	Spanner Size (mm)	Tails Diameter (mm ²)	Pack Qty
QCGM32TPW	White Nylon 32mm Meter Tail Glands With Plug	32	14.7	42	Line & Neutral: 25mm ² CPC: 16mm ²	1
QCGM40TPW	White Nylon 40mm Meter Tail Glands With Plug	40	18.4	49	Line & Neutral: 25mm ² CPC: 16mm ²	1
QBG32TP	Brass 32mm Meter Tail Glands With Plug	32	8	36	Line & Neutral: 25mm ² CPC: 16mm ²	1
QBG40TP	Brass 40mm Meter Tail Glands With Plug	40	8	46.2	Line & Neutral: 25mm ² CPC: 16mm ²	1

Nylon Glands

- Made from Polyamide 6
- IP68 ingress protection
- Includes locknut & washer



Part Number	Description	Colour	Thread Diameter (mm)	Entry Thread (mm)	Spanner Size (mm)	Cable Diameter (mm)	Pack Qty
QCGM12BLK	Nylon 12mm Glands	● Black	12	7.9	15	3 - 6.5	10
QCGM12GRY	Nylon 12mm Glands	● Grey	12	7.9	15	3 - 6.5	10
QCGM12RED	Nylon 12mm Glands	● Red	12	7.9	15	3 - 6.5	10
QCGM16BLK	Nylon 16mm Glands	● Black	16	15.5	22	5 - 10	10
QCGM16GRY	Nylon 16mm Glands	● Grey	16	15.5	22	5 - 10	10
QCGM16RED	Nylon 16mm Glands	● Red	16	15.5	22	5 - 10	10
QCGM16WHT	Nylon 16mm Glands	○ White	16	15.5	22	5 - 10	10
QCGM20AG	Nylon 20mm Glands	● Anthracite Grey	20	10	24	8 - 12	10
QCGM20BLK	Nylon 20mm Glands	● Black	20	10	24	8 - 12	10
QCGM20GRY	Nylon 20mm Glands	● Grey	20	10	24	8 - 12	10
QCGM20LBLK	Nylon 20mm Glands	● Black	20	10	27	10 - 14	10
QCGM20LGRY	Nylon 20mm Glands	● Grey	20	10	27	10 - 14	10
QCGM20LRED	Nylon 20mm Glands	● Red	20	10	27	10 - 14	10
QCGM20LWHT	Nylon 20mm Glands	○ White	20	10	27	10 - 14	10
QCGM20RED	Nylon 20mm Glands	● Red	20	10	24	8 - 12	10
QCGM20WHT	Nylon 20mm Glands	○ White	20	10	24	8 - 12	10
QCGM25BLK	Nylon 25mm Glands	● Black	25	15.2	33	13 - 18	10
QCGM25GRY	Nylon 25mm Glands	● Grey	25	15.2	33	13 - 18	10
QCGM25RED	Nylon 25mm Glands	● Red	25	15.2	33	13 - 18	10
QCGM25WHT	Nylon 25mm Glands	○ White	25	15.2	33	13 - 18	10
QCGM32BLK	Nylon 32mm Glands	● Black	32	14.7	42	18 - 25	10
QCGM32GRY	Nylon 32mm Glands	● Grey	32	14.7	42	18 - 25	10
QCGM32RED	Nylon 32mm Glands	● Red	32	14.7	42	18 - 25	10
QCGM32WHT	Nylon 32mm Glands	○ White	32	14.7	42	18 - 25	10
QCGM40BLK	Nylon 40mm Glands	● Black	40	18.4	53	22 - 32	5
QCGM40GRY	Nylon 40mm Glands	● Grey	40	18.4	53	22 - 32	5
QCGM40WHT	Nylon 40mm Glands	○ White	40	18.4	53	22 - 32	5
QCGM50BLK	Nylon 50mm Glands	● Black	50	17.8	60	30 - 38	5
QCGM50GRY	Nylon 50mm Glands	● Grey	50	17.8	60	30 - 38	5
QCGM50WHT	Nylon 50mm Glands	○ White	50	17.8	60	30 - 38	5
QCGM63BLK	Nylon 63mm Glands	● Black	63	18.5	75	34 - 44	5
QCGM63GRY	Nylon 63mm Glands	● Grey	63	18.5	75	34 - 44	5
QCGM63WHT	Nylon 63mm Glands	○ White	63	18.5	75	34 - 44	5

PVC Tapes

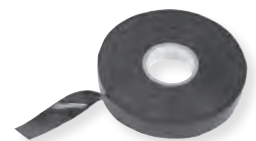
Tested for: Thickness, Tensile Elongation, Adhesion, Adhesion to Backing, Flagging, Corrosive Sulphur, Flame Propagation (CAT 2), Plastic to 31/90 (PVCP), Working Temperature up to 70°C.



- Made from self extinguishing flame retardant PVC
- Manufactured to comply with BS EN 60454-3
- Ideal for electrical binding, colour coding and identification

Part Number	Description	Colour	Length (M)	Width (mm)	Pack Qty
1920B	PVC Tape 19mm x 20m Rolls	● Black	20	19	10 Rolls
1920BL	PVC Tape 19mm x 20m Rolls	● Blue	20	19	10 Rolls
1920BR	PVC Tape 19mm x 20m Rolls	● Brown	20	19	10 Rolls
1920GR	PVC Tape 19mm x 20m Rolls	● Green	20	19	10 Rolls
1920GY	PVC Tape 19mm x 20m Rolls	● Grey	20	19	10 Rolls
1920R	PVC Tape 19mm x 20m Rolls	● Red	20	19	10 Rolls
1920W	PVC Tape 19mm x 20m Rolls	○ White	20	19	10 Rolls
1920Y	PVC Tape 19mm x 20m Rolls	● Yellow	20	19	10 Rolls
1920YG	PVC Tape 19mm x 20m Rolls	● Yellow/Green	20	19	10 Rolls
1933B	PVC Tape 19mm x 33m Rolls	● Black	33	19	10 Rolls
1933BL	PVC Tape 19mm x 33m Rolls	● Blue	33	19	10 Rolls
1933BR	PVC Tape 19mm x 33m Rolls	● Brown	33	19	10 Rolls
1933GR	PVC Tape 19mm x 33m Rolls	● Green	33	19	10 Rolls
1933GY	PVC Tape 19mm x 33m Rolls	● Grey	33	19	10 Rolls
1933R	PVC Tape 19mm x 33m Rolls	● Red	33	19	10 Rolls
1933W	PVC Tape 19mm x 33m Rolls	○ White	33	19	10 Rolls
1933Y	PVC Tape 19mm x 33m Rolls	● Yellow	33	19	10 Rolls
1933YG	PVC Tape 19mm x 33m Rolls	● Yellow/Green	33	19	10 Rolls
1920MX01	Mixed Phase Colours (10 Pack) (2 x Black, Brown, Blue, Grey, Yellow/Green)		20	19	1 Pack
1920MX02	Mixed Colours (10 Pack) (2 x Black, Brown, White & 1 x Red, Blue, Yellow, Yellow/Green)		20	19	1 Pack

Self-Amalgamating Tape



Part Number	Description	Length (M)	Width (mm)	Pack Qty
1910BSA	Black Self-Amalgamating Tape 19mm x 10m Rolls	10	19	1

Specialist Tapes



Part Number	Description	Length (M)	Width (mm)	Pack Qty
QDT50X50	Duct Tape 50mm x 50m Roll	50	50	1 Roll
QUGT100X200	Underground Warning Tape 100mm x 200m Roll	200	100	1 Roll

Push in Connectors

Terminal Capacity: 0.5mm²-2.5mm² Stranded or Solid Core
 Operating Temperature (Max.): 110°C



Part Number	Description	Colour	Pack Qty
QP2242R2	24A 450V 2 Port Push In Wire Connectors	● Red Transparent	100
QP3242O2	24A 450V 3 Port Push In Wire Connectors	● Orange Transparent	100
QP4242Y2	24A 450V 4 Port Push In Wire Connectors	● Yellow Transparent	100
QP5242T2	24A 450V 5 Port Push In Wire Connectors	○ Transparent	100
QP6242P2	24A 450V 6 Port Push In Wire Connectors	● Purple Transparent	100
QP8242B2	24A 450V 8 Port Push In Wire Connectors	● Black Transparent	50

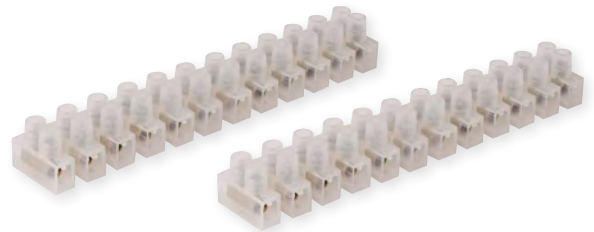
Earthing Terminal Blocks



Part Number	Description	Terminal Area (mm ²)	Pack Qty
QBTB4	Brass 4 Way Earthing Terminal Block	3 x 16, 1 x 25	10
QBTB8	Brass 8 Way Earthing Terminal Block	6 x 16, 2 x 25	5

Terminal Blocks

- PE material
- Captive screw
- Brass insert



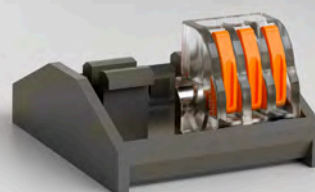
Part Number	Description	Terminal Area (mm ²)	Pack Qty
QTB5	Clear 5 Amp 12 Way Terminal Block Strips	6	10
QTB15	Clear 15 Amp 12 Way Terminal Block Strips	12	10
QTB30	Clear 30 Amp 12 Way Terminal Block Strips	16	10

Lever Connectors & Connection Boxes



Strong, quick and reliable solutions.

Focusing on strong, quick and reliable solutions, the new Q-Nect range offers great versatility for electrical connections. Each product is packed with features which makes your installations quicker and easier.



www.unicrimp.com/q-nect

Lever Connectors



Part Number	Description	Conductor Strip Length (mm ²)	Conductor Size (mm ²)	Rated Current (A)	Colour	Pack Qty
QL2322	32A 450V 2 Port Lever Wire Connectors	10	0.2 - 4.0 (Stranded or Solid Core)	32	○ Transparent	50
QL3322	32A 450V 3 Port Lever Wire Connectors	10	0.2 - 4.0 (Stranded or Solid Core)	32	○ Transparent	50
QL5322	32A 450V 5 Port Lever Wire Connectors	10	0.2 - 4.0 (Stranded or Solid Core)	32	○ Transparent	30

IP66 Junction Box



Part Number	Description	Colour	Size (mm)	Gland Size (mm)	Entry Thread (mm)	Pack Qty
QOE8553AGY	IP66 Weatherproof Enclosure	● Anthracite Grey	85 x 85 x 52	20	20	1
QOE8553BLK	IP66 Weatherproof Enclosure	● Black	85 x 85 x 52	20	20	1
QOE8553AGYF	IP66 Weatherproof Enclosure With Connectors	● Anthracite Grey	85 x 85 x 52	20	20	1
QOE8553BLKF	IP66 Weatherproof Enclosure With Connectors	● Black	85 x 85 x 52	20	20	1
QOE8553AGYTF	IP66 Weatherproof Enclosure With Semi-Transparent Lid With Connectors	● Anthracite Grey	85 x 85 x 52	20	20	1
QOE8553BLKTF	IP66 Weatherproof Enclosure With Semi-Transparent Lid With Connectors	● Black	85 x 85 x 52	20	20	1

2 & 3 Way Connection Box



Part Number	Description	Rated Current (A)	Min. Cable Dia. (mm)	Max. Cable Dia. (mm)	Pack Qty
QOE5232BLK	3 Pole 2 Way 16A IP66 Connection Box	16	4	6.5	1
QOE8342BLK	4 Pole 2 Way 24A IP68 Inline Connection Box	24	5	8	1
QOE8343BLK	4 Pole 3 Way 24A IP68 (M16+M20) Connection Box	24	5	8	1
QOE8332BLK	4 Pole 2 Way 24A IP68 Inline Connection Box With Connector	24	5	8	1
QOE8333BLK	4 Pole 3 Way 24A IP68 (M16+M20) Connection Box With Connector	24	5	8	1

3 Way IP68 'T' & Inline Connectors



Part Number	Description	Rated Current (A)	Min. Cable Dia. (mm)	Max. Cable Dia. (mm)	Pack Qty
QOE3052BLK	5 Pole 2 Way 24A IP68 Inline Connector	24	6	14	1
QOE3053BLK	5 Pole 3 Way 24A IP68 T-Connector	24	6	14	1

Earthing Clamps



Part Number	Description	Thread Size	Gland Size (mm)	Pack Qty
QBEPS	Brass Earthing Plate - Single	M4	20	2
QBEPD	Brass Earthing Plate - Double	M4	20	2

Cable Clips

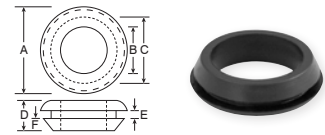
- Self grip design
- Chemical inertness
- Stress crack resistance
- Thick steel nails prevents snapping
- Long nail for good pull out value
- High grade tough polyethylene



Part Number	Description	Colour	Cable Dimensions (mm ²)	Pack Qty
QFC1	Cable Clips for 2 x 4mm Bellwire	○ Clear	2 x 4	100
QFC2	Cable Clips for 3 x 5mm Speaker Cable	○ Clear	3 x 5	100
QFC3	Cable Clips for 4 x 6mm Twin Sheath Cable	○ Clear	4 x 6	100
QFC4	Cable Clips for 1.0-1.5mm ² T&E Cable	● Grey	5 x 8	100
QFC5	Cable Clips for 2.5mm ² T&E Cable	● Grey	6 x 10	100
QFC6	Cable Clips for 4-6mm ² T&E Cable	● Grey	7 x 14	100
QFC7	Cable Clips for 10-16mm ² T&E Cable	● Grey	9 x 18	100
QFWC1	Cable Clips for 11 x 22mm Flat Oval Conduit	○ White	11 x 22	100
QFWC4	Cable Clips for Flat 1-1.5mm ² T&E Cable	○ White	5 x 8	100
QFWC5	Cable Clips for Flat 2.5mm ² T&E Cable	○ White	6 x 10	100
QFWC6	Cable Clips for 4-6mm ² T&E Cable	○ White	7 x 14	100
QFWC7	Cable Clips for 10-16mm ² T&E Cable	○ White	9 x 18	100
QDC1	Double Cable Clips for 2 x 1.0-1.5mm ² T&E Cable	● Grey	5 x 16	100
QDC2	Double Cable Clips for 2 x 2.5mm ² T&E Cable	● Grey	6 x 20	100
QJ12B	Dual Coaxial Cable Clips (RG59+2C and HYCF Dual)	● Black	6 x 12.5	100
QJ12W	Dual Coaxial Cable Clips (RG59+2C and HYCF Dual)	○ White	6 x 12.5	100

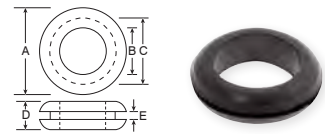
Part Number	Description	Colour	Min Cable Dia. (mm)	Max Cable Dia. (mm)	Pack Qty
QRC1	Cable Clips For 2-3mm Round Cable	○ Clear	2	3	100
QRC1B	Cable Clips for 2-3mm Round Cable	● Black	2	3	100
QRC2	Cable Clips for 3-5mm Round Cable	○ Clear	3	5	100
QRC2B	Cable Clips for 3-5mm Round Cable	● Black	3	5	100
QRC3	Cable Clips for 3-5mm Round Cable	○ White	3	5	100
QRC4	Cable Clips for 5-7mm Round Cable	● Black	5	7	100
QRC5	Cable Clips for 5-7mm Round Cable	○ Clear	5	7	100
QRC6	Cable Clips for 5-7mm Round Cable	○ White	5	7	100
QRC7	Cable Clips for 7-10mm Round Cable	● Black	7	10	100
QRC8	Cable Clips for 7-10mm Round Cable	● Brown	7	10	100
QRC9	Cable Clips for 7-10mm Round Cable	● Red	7	10	100
QRC10	Cable Clips for 7-10mm Round Cable	○ White	7	10	100
QRC11	Cable Clips for 10-14mm Round Cable	● Black	10	14	100
QRC12	Cable Clips for 10-14mm Round Cable	○ White	10	14	100
QRC13	Cable Clips for 14-20mm Round Cable	● Black	14	20	50
QRC14	Cable Clips for 14-20mm Round Cable	○ White	14	20	50
QRC15	Cable Clips for 18-22mm Round Cable	● Black	18	22	50
QRC16	Cable Clips for 18-22mm Round Cable	○ White	18	22	50
QRC17	Cable Clips for 22-26mm Round Cable	● Black	22	26	50
QRC18	Cable Clips for 22-26mm Round Cable	○ White	22	26	50

Grommets - Quick Fit



Part Number	Description	A (mm)	B (mm)	C (mm)	D (mm)	E (mm)	F (mm)	Pack Qty
QGROMQ20CLOSED	Black Quick Fit Closed Cable Grommets 20mm	24.7	16.6	19.8	7.9	2.8	3.5	100
QGROMQ25CLOSED	Black Quick Fit Closed Cable Grommets 25mm	29.6	20.6	24.9	8.8	2.8	3.4	100
QGROMQ32CLOSED	Black Quick Fit Closed Cable Grommets 32mm	37.5	27	32	10.5	2	4.8	50
QGROMQ20OPEN	Black Quick Fit Open Cable Grommets 20mm	23.6	16.2	19.9	8.4	2.1	4.4	100
QGROMQ25OPEN	Black Quick Fit Open Cable Grommets 25mm	29.5	20.4	24.6	8.6	2.1	4.1	100
QGROMQ32OPEN	Black Quick Fit Open Cable Grommets 32mm	37.5	27	32	10.5	2	4.8	50

Grommets - Standard



Part Number	Description	A (mm)	B (mm)	C (mm)	D (mm)	E (mm)	Pack Qty
QGROM20CLOSED	Black Closed Cable Grommets 20mm	22.1	15.7	19.8	5.5	1.4	100
QGROM25CLOSED	Black Closed Cable Grommets 25mm	29.6	18.8	25.2	6.5	2	50
QGROM32CLOSED	Black Closed Cable Grommets 32mm	37.5	27	32	9.2	2	50
QGROM20OPEN	Black Open Cable Grommets 20mm	23.2	16.2	19.6	6.7	2.1	100
QGROM25OPEN	Black Open Cable Grommets 25mm	29	20	25.1	7.3	2.4	50
QGROM32OPEN	Black Open Cable Grommets 32mm	37.5	27	32	9.2	2	50

Grommet Strip



Part Number	Description	Length (M)	Width (mm)	Height (mm)	Pack Qty
QGT3B	5mm x 8mm x 3M Grommet Strip Edge Roll - Black	3	5	8	1
QGT5B	5mm x 8mm x 5M Grommet Strip Edge Roll - Black	5	5	8	1
QGT10B	5mm x 8mm x 10M Grommet Strip Edge Roll - Black	10	5	8	1

Cable Cleats



Part Number	Description	Min Cable Dia. (mm)	Max Cable Dia. (mm)	Width (mm)	Length (mm)	Depth (mm)	Pack Qty
QC4	Black Cable Cleats 10.1mm	7.7	10	14.5	28.9	15.5	100
QC5	Black Cable Cleats 12.7mm	10.1	12.7	17.5	30.8	15.5	100
QC6	Black Cable Cleats 15.2mm	12.6	15.2	19.7	32.8	15.5	100
QC7	Black Cable Cleats 17.8mm	15.1	17.8	21.8	35	15.5	100
QC8	Black Cable Cleats 20.3mm	17.7	20.3	25.5	37.6	18.5	100
QC9	Black Cable Cleats 22.8mm	20.2	22.8	26.7	41	18.5	100
QC10	Black Cable Cleats 25.4mm	22.7	25.4	29.7	43	18.5	100
QC11	Black Cable Cleats 27.7mm	25.3	27.7	32.1	46.5	21.5	50
QC12	Black Cable Cleats 30.0mm	27.6	30.5	37.2	53.4	21.5	50
QC14	Black Cable Cleats 35.6mm	30.4	35.5	38.4	61.3	24.4	50
QC16	Black Cable Cleats 40.6mm	35.4	40.6	49.8	63.1	24.4	50
QC18	Black Cable Cleats 45.7mm	40.5	45.7	51.2	68.3	24.4	50
QC20	Black Cable Cleats 50.4mm	45.6	50.8	55.6	72.8	24.4	20

Metal Cable Cleats

- Oval mounting slot for varying cable thicknesses



Part Number	Description	Min Cable Dia. (mm)	Max Cable Dia. (mm)	Width (mm)	Fixing Diameter (mm)	Pack Qty
QC3MBK	Metal Cable Cleats 5.0-7.6mm	5	7.6	16.3	5.7	10
QC4MBK	Metal Cable Cleats 7.7-10.0mm	7.7	10	16.3	5.7	10
QC5MBK	Metal Cable Cleats 10.1-12.7mm	10.1	12.7	16.5	5.7	10
QC6MBK	Metal Cable Cleats 12.6-15.2mm	12.6	15.2	16.5	5.7	10
QC7MBK	Metal Cable Cleats 15.1-17.8mm	15.1	17.8	16.5	5.7	10
QC8MBK	Metal Cable Cleats 17.7-20.3mm	17.7	20.3	20.3	5.7	10
QC9MBK	Metal Cable Cleats 20.2-22.8mm	20.2	22.8	20.5	5.7	10
QC10MBK	Metal Cable Cleats 22.7-25.4mm	22.7	25.4	20.3	5.7	10
QC11MBK	Metal Cable Cleats 25.3-27.7mm	25.3	27.7	22.5	5.7	10
QC12MBK	Metal Cable Cleats 27.6-30.5mm	27.6	30.5	25.3	5.7	10
QC14MBK	Metal Cable Cleats 30.4-35.5mm	30.4	35.5	25.3	5.7	10
QC16MBK	Metal Cable Cleats 35.4-40.6mm	35.4	40.6	25.3	5.7	10
QC18MBK	Metal Cable Cleats 40.5-45.7mm	40.5	45.7	25.3	5.7	10
QC20MBK	Metal Cable Cleats 45.6-50.8mm	45.6	50.8	25.3	5.7	10

Stainless Steel Roller Ball Cable Ties



- Made from 316 grade steel
- Minimum loop tensile strength 4.6mm wide = 44kg
- Minimum loop tensile strength 7.9mm wide = 110kg



Part Number	Finish	Length (mm)	Width (mm)	Bundle Diameter (mm)	Min. Tensile Strength (Kg)	Pack Qty
QSST150S	Steel	150	4.6	35	44	100
QSST200S	Steel	200	4.6	50	44	100
QSST300S	Steel	300	4.6	83	44	100
QSST300LH	Steel	300	7.9	83	110	100
QSST360LH	Steel	360	7.9	100	110	100
QSST360S	Steel	360	4.6	100	44	100
QSST520S	Steel	520	4.6	150	44	100
QSST520LH	Steel	520	7.9	150	110	50
QSST840LH	Steel	840	7.9	250	110	50

Stainless Steel Mounts

- For indoor and outdoor use, fully weather proof, UV and fire resistant
- High quality 316 grade stainless steel



Part Number	Description	Fixing Dia. (mm)	Max Cable Tie Width (mm)	Pack Qty
QSSTM-4	Stainless Steel Cable Tie Mount M4	4.2	10	50
QSSTM-6	Stainless Steel Cable Tie Mount M6	6.2	10	50

Fire Safe Cable Clips

- Cable clips prevent cables dropping in the event of a fire
- Can be used in PVC trunking or surface mounted
- No corrosive finish



Part Number	Description	Fire Rating	Trunking Width (mm)	Pack Qty
QFGFC25	Fire-Safe Cable Clips 25mm (120Min)	120 Minutes (2 Hours)	25	10
QFGFC40	Fire-Safe Cable Clips 40mm (120Min)	120 Minutes (2 Hours)	32 - 40	10
QFGFC50	Fire-Safe Cable Clips 50mm (120Min)	120 Minutes (2 Hours)	50	10

Fire Safe Cable Clips



Part Number	Description	Colour	Suitable Cable Size (mm ²)	Pack Qty
QMC25	Metal Cable Clips for 1.0-2.5mm ² T&E Cable	● Galvanised	1 to 2.5 (T&E)	100
QMC25GY	Metal LSF Cable Clips for 1.0-2.5mm ² T&E Cable	● Grey	1 to 2.5 (T&E)	100
QMC25RD	Metal LSF Cable Clips for 1.0-2.5mm ² T&E Cable	● Red	1 to 2.5 (T&E)	100
QMC25WH	Metal LSF Cable Clips for 1.0-2.5mm ² T&E Cable	○ White	1 to 2.5 (T&E)	100
QMC6	Metal Cable Clip for 4-6mm ² T&E Cable	● Galvanised	4 to 6 (T&E)	100
QMC6GY	Metal LSF Cable Clip for 4-6mm ² T&E Cable	● Grey	4 to 6 (T&E)	100
QMC6RD	Metal LSF Cable Clip for 4-6mm ² T&E Cable	● Red	4 to 6 (T&E)	100
QMC6WH	Metal LSF Cable Clip for 4-6mm ² T&E Cable	○ White	4 to 6 (T&E)	100

Screws



Part Number	Description	Length	Thread Dia. (mm)	Pack Qty
QMA48-40	Masonry Fixing Screw 4.8 x 40mm	40	4.8	100

Saddle Clips & P Clips



- Assist installation of fire cable to meet the requirement of BS 5839-1: 2017
- Tested & approved to BS 476 Pt.6 and BS 476 Pt.7

Part Number	Coating	Ref.	Colour	1mm	1.5mm	2.5mm	4mm	Fixing Dia. (mm)	Min Cable Dia. (mm)	Max Cable Dia. (mm)	Pack Qty
QPC28LSFB	LSF	28	● Black	3L/1.0	2L/1.5	-	-	4	-	6.6	50
QPC28LSFR	LSF	28	● Red	3L/1.0	2L/1.5	-	-	4	-	6.6	50
QPC28LSFW	LSF	28	○ White	3L/1.0	2L/1.5	-	-	4	-	6.6	50
QPC30LSFB	LSF	30	● Black	4L/1.0	3L/1.5	-	-	5	-	7	50
QPC30LSFR	LSF	30	● Red	4L/1.0	3L/1.5	-	-	5	-	7	50
QPC30LSFW	LSF	30	○ White	4L/1.0	3L/1.5	-	-	5	-	7	50
QPC32LSFB	LSF	32	● Black	-	-	2L/2.5	-	5	-	8	50
QPC32LSFR	LSF	32	● Red	-	-	2L/2.5	-	5	-	8	50
QPC32LSFW	LSF	32	○ White	-	-	2L/2.5	-	5	-	8	50
QPC34LSFB	LSF	34	● Black	-	4L/1.5	3L/2.5	-	5	-	8.7	50
QPC34LSFR	LSF	34	● Red	-	4L/1.5	3L/2.5	-	5	-	8.7	50
QPC34LSFW	LSF	34	○ White	-	4L/1.5	3L/2.5	-	5	-	8.7	50
QPC37LSFB	LSF	37	● Black	-	-	4L/2.5	2L/4.0	5	-	9.7	50
QPC37LSFR	LSF	37	● Red	-	-	4L/2.5	2L/4.0	5	-	9.7	50
QPC37LSFW	LSF	37	○ White	-	-	4L/2.5	2L/4.0	5	-	9.7	50
QSC302LSFB	LSF	302	● Black	3L/1.0	2L/1.5	-	-	3.8	-	-	50
QSC302LSFR	LSF	302	● Red	3L/1.0	2L/1.5	-	-	3.8	-	-	50
QSC302LSFW	LSF	302	○ White	3L/1.0	2L/1.5	-	-	3.8	-	-	50
QSC342LSFB	LSF	342	● Black	4L/1.0	3L/1.5 - 4L/1.5	2L/2.5 - 3L/2.5	-	5	-	-	50
QSC342LSFR	LSF	342	● Red	4L/1.0	3L/1.5 - 4L/1.5	2L/2.5 - 3L/2.5	-	5	-	-	50
QSC342LSFW	LSF	342	○ White	4L/1.0	3L/1.5 - 4L/1.5	2L/2.5 - 3L/2.5	-	5	-	-	50
QSC382LSFB	LSF	382	● Black	-	-	-	2L/4.0	5	-	-	50
QSC382LSFR	LSF	382	● Red	-	-	-	2L/4.0	5	-	-	50
QSC382LSFW	LSF	382	○ White	-	-	-	2L/4.0	5	-	-	50

Saddle Bar Spacers



Part Number	Description	Width (mm)	Length (mm)	Height (mm)	Colour	Pack Qty
QSBS20	Metal Saddle Bar Spacer 20mm	21.5	56	26	● Galvanised Steel	10
QSBS20B	Metal Saddle Bar Spacer 20mm	21.5	56	26	● Black	10
QSBS20W	Metal Saddle Bar Spacer 20mm	21.5	56	26	○ White	10
QSBS25	Metal Saddle Bar Spacer 25mm	22.5	63	33	● Galvanised Steel	10
QSBS25B	Metal Saddle Bar Spacer 25mm	22.5	63	33	● Black	10
QSBS25W	Metal Saddle Bar Spacer 25mm	22.5	63	33	○ White	10

All-Round Banding

- Protective LSF coating to prevent cable damage
- Pre-punched steel banding ideal for fixing and general construction
- Highly versatile multi-purpose fixing band
- Easy to cut and bend



Part Number	Description	Colour	Length (m)	Fixing Diameter (mm)	Band Width (mm)	Pack Qty
QARB12B	All-Round Banding 12mm x 10M	● Black	10	5	12	1
QARB12G	Galvanised All-Round Banding 12mm x 10M	● Galvanised	10	5	12	1
QARB12R	All-Round Banding 12mm x 10M	● Red	10	5	12	1
QARB12W	All-Round Banding 12mm x 10M	○ White	10	5	12	1
QARB17B	All-Round Banding 17mm x 10M	● Black	10	7	17	1
QARB17G	Galvanised All-Round Banding 17mm x 10M	● Galvanised	10	7	17	1

Hybrid Sealant

Part Number	Description	Colour	Pack Qty
BUK30623574	Fire Retardant Hybrid Sealant - 290ml	○ White	1



Acrylic Sealant

Part Number	Description	Pack Qty
BTKFPIA300W	Fire Resistant Acrylic Sealant - 300ml	1



Expanding Foam

Part Number	Description	Pack Qty
BUK30811859	Fire Retardant Hand Held Expanding Foam	1



Squarelock CSK BZP Screws



Part Number	Description	Length (mm)	Head Dia. (mm)	Thread Dia. (mm)	Pack Qty
QSL8-075	Squarelock Flat Head Countersunk BZP Woodscrews 8 x 0.75"	19	8.1	4.2	200
QSL8-1	Squarelock Flat Head Countersunk BZP Woodscrews 8 x 1"	25.4	8.1	4.2	200
QSL8-125	Squarelock Flat Head Countersunk BZP Woodscrews 8 x 1.25"	31.7	8.1	4.2	200
QSL8-15	Squarelock Flat Head Countersunk BZP Woodscrews 8 x 1.5"	40	8.1	4.2	200
QSL8-175	Squarelock Flat Head Countersunk BZP Woodscrews 8 x 1.75"	44.4	8.1	4.2	200
QSL8-2	Squarelock Flat Head Countersunk BZP Woodscrews 8 x 2"	50.8	8.1	4.2	200
QSL8-225	Squarelock Flat Head Countersunk BZP Woodscrews 8 x 2.25"	57	8.1	4.2	200
QSL8-25	Squarelock Flat Head Countersunk BZP Woodscrews 8 x 2.5"	63.5	8.1	4.2	200
QSL8-3	Squarelock Flat Head Countersunk BZP Woodscrews 8 x 3"	76.2	8.1	4.2	100
QSL10-1	Squarelock Flat Head Countersunk BZP Woodscrews 10 x 1"	25.4	9.5	4.6	200
QSL10-125	Squarelock Flat Head Countersunk BZP Woodscrews 10 x 1.25"	31.7	9.5	4.6	200
QSL10-15	Squarelock Flat Head Countersunk BZP Woodscrews 10 x 1.5"	40	9.5	4.6	200
QSL10-175	Squarelock Flat Head Countersunk BZP Woodscrews 10 x 1.75"	44.4	9.5	4.6	200
QSL10-2	Squarelock Flat Head Countersunk BZP Woodscrews 10 x 2"	50.8	9.5	4.6	200
QSL10-25	Squarelock Flat Head Countersunk BZP Woodscrews 10 x 2.5"	63.5	9.5	4.6	100
QSL10-3	Squarelock Flat Head Countersunk BZP Woodscrews 10 x 3"	76.2	9.5	4.6	100

Squarelock RH BZP Screws



Part Number	Description	Length (mm)	Head Dia. (mm)	Thread Dia. (mm)	Pack Qty
QSLR8-75	Squarelock Round Head BZP Woodscrews 8 x 0.75"	19	8.1	4.2	200
QSLR8-1	Squarelock Round Head BZP Woodscrews 8 x 1"	25.4	8.1	4.2	200
QSLR8-125	Squarelock Round Head BZP Woodscrews 8 x 1.25"	31.7	8.1	4.2	200
QSLR8-15	Squarelock Round Head BZP Woodscrews 8 x 1.5"	40	8.1	4.2	200
QSLR8-175	Squarelock Round Head BZP Woodscrews 8 x 1.75"	44.4	8.1	4.2	200
QSLR8-2	Squarelock Round Head BZP Woodscrews 8 x 2"	50.8	8.1	4.2	200
QSLR8-225	Squarelock Round Head BZP Woodscrews 8 x 2.25"	57	8.1	4.2	200
QSLR8-25	Squarelock Round Head BZP Woodscrews 8 x 2.5"	63.5	8.1	4.2	200
QSLR8-3	Squarelock Round Head BZP Woodscrews 8 x 3"	76.2	8.1	4.2	100
QSLR10-1	Squarelock Round Head BZP Woodscrews 10 x 1"	25.4	9.5	4.6	200
QSLR10-125	Squarelock Round Head BZP Woodscrews 10 x 1.25"	31.7	9.5	4.6	200
QSLR10-15	Squarelock Round Head BZP Woodscrews 10 x 1.5"	40	9.5	4.6	200
QSLR10-175	Squarelock Round Head BZP Woodscrews 10 x 1.75"	44.4	9.5	4.6	200
QSLR10-2	Squarelock Round Head BZP Woodscrews 10 x 2"	50.8	9.5	4.6	200
QSLR10-25	Squarelock Round Head BZP Woodscrews 10 x 2.5"	63.5	9.5	4.6	100
QSLR10-3	Squarelock Round Head BZP Woodscrews 10 x 3"	76.2	9.5	4.6	100

Squarelock Bit



Part Number	Description	Pack Qty
QSL8-BIT	Squarelock Woodscrew Bit SQ2	1

Twin Thread Screw



Part Number	Description	Length (mm)	Head Dia. (mm)	Thread Dia. (mm)	Pack Qty
QWS8-075	Pozi Flat Head Countersunk Twin Thread BZP Screws 8 x 0.75"	19	8.1	4.2	200
QWS8-1	Pozi Flat Head Countersunk Twin Thread BZP Screws 8 x 1"	25.4	8.1	4.2	200
QWS8-125	Pozi Flat Head Countersunk Twin Thread BZP Screws 8 x 1.25"	31.7	8.1	4.2	200
QWS8-15	Pozi Flat Head Countersunk Twin Thread BZP Screws 8 x 1.5"	40	8.1	4.2	200
QWS8-175	Pozi Flat Head Countersunk Twin Thread BZP Screws 8 x 1.75"	44.4	8.1	4.2	200
QWS8-20	Pozi Flat Head Countersunk Twin Thread BZP Screws 8 x 2"	50.8	8.1	4.2	200
QWS8-225	Pozi Flat Head Countersunk Twin Thread BZP Screws 8 x 2.25"	57	8.1	4.2	200
QWS8-25	Pozi Flat Head Countersunk Twin Thread BZP Screws 8 x 2.5"	63.5	8.1	4.2	200
QWS8-30	Pozi Flat Head Countersunk Twin Thread BZP Screws 8 x 3"	76.2	8.1	4.2	100
QWS10-10	Pozi Flat Head Countersunk Twin Thread BZP Screws 10 x 1"	25.4	9.5	4.6	200
QWS10-125	Pozi Flat Head Countersunk Twin Thread BZP Screws 10 x 1.25"	31.7	9.5	4.6	200
QWS10-15	Pozi Flat Head Countersunk Twin Thread BZP Screws 10 x 1.5"	40	9.5	4.6	200
QWS10-175	Pozi Flat Head Countersunk Twin Thread BZP Screws 10 x 1.75"	44.4	9.5	4.6	200
QWS10-20	Pozi Flat Head Countersunk Twin Thread BZP Screws 10 x 2"	50.8	9.5	4.6	200
QWS10-25	Pozi Flat Head Countersunk Twin Thread BZP Screws 10 x 2.5"	63.5	9.5	4.6	100
QWS10-3	Pozi Flat Head Countersunk Twin Thread BZP Screws 10 x 3"	76.2	9.5	4.6	100
QWS10-4	Pozi Flat Head Countersunk Twin Thread BZP Screws 10 x 4"	101.6	9.5	4.6	100
QWDS6X075	Pozi Flat Head Countersunk Twin Thread BZP Screws BZP 6 x 0.75"	19	6.8	3.6	200
QWDS6X1	Pozi Flat Head Countersunk Twin Thread BZP Screws BZP 6 x 1"	25.4	6.8	3.6	200
QWDS6X125	Pozi Flat Head Countersunk Twin Thread BZP Screws BZP 6 x 1.25"	31.7	6.8	3.6	200
QWDS6X15	Pozi Flat Head Countersunk Twin Thread BZP Screws BZP 6 x 1.5"	40	6.8	3.6	200

Extension Stud



Part Number	Description	Length (mm)	Thread Size	Spanner Size (mm)	Thread Depth (mm)	Pack Qty
QEXT	Extension Studs M3.5 x 20mm	35	M3.5	6	12	100

Round Head Brass Screws



Part Number	Description	Length (mm)	Head Dia. (mm)	Thread Dia. (mm)	Pack Qty
QBWS6-1	Slotted Round Head Brass Screws 6 X 1"	25.4	6.5	3.3	100
QBWS8-075	Slotted Round Head Brass Screws 8 X 0.75"	19	8.25	3.8	100
QBWS8-1	Slotted Round Head Brass Screws 8 X 1"	25.4	8.25	3.8	100
QBWS8-15	Slotted Round Head Brass Screws 8 X 1.5"	38	8.25	3.8	100
QBWS8-175	Slotted Round Head Brass Screws 8 X 1.75"	44.4	8.25	3.8	100
QBWS8-20	Slotted Round Head Brass Screws 8 X 2"	50.8	8.25	3.8	100

Dry Wall



Part Number	Description	Length (mm)	Head Dia. (mm)	Thread Dia. (mm)	Pack Qty
QDWS35-38	Countersunk Black Dry Wall Screws 3.5 X 38mm	38	8.2	3.5	100

Pozi PH BZP



Part Number	Description	Length (mm)	Head Dia. (mm)	Thread Dia. (mm)	Pack Qty
QPPST8-50	Pozi Panhead BZP Self-Tapping Screws 8 x 0.5"	13	8.1	4.2	100
QPPST8-75	Pozi Panhead BZP Self-Tapping Screws 8 x 0.75"	19	8.1	4.2	100
QPPST8-1	Pozi Panhead BZP Self-Tapping Screws 8 x 1"	25.4	8.1	4.2	100
QPPST8-15	Pozi Panhead BZP Self-Tapping Screws 8 x 1.5"	40	8.1	4.2	100

Pozi RH BZP



Part Number	Description	Length (mm)	Head Dia. (mm)	Thread Dia. (mm)	Pack Qty
QWDSR6-1	Pozi Round Head Twin Thread BZP Woodscrews 6 X 1"	25.4	6.2	4.2	200
QWDSR8-075	Pozi Round Head Twin Thread BZP Woodscrews 8 X 0.75"	19	8	4.2	200
QWDSR8-1	Pozi Round Head Twin Thread BZP Woodscrews 8 X 1"	25.4	8	4.2	200
QWDSR8-125	Pozi Round Head Twin Thread BZP Woodscrews 8 X 1.25"	31.7	8	4.2	200
QWDSR8-15	Pozi Round Head Twin Thread BZP Woodscrews 8 X 1.5"	40	8	4.2	200
QWDSR8-175	Pozi Round Head Twin Thread BZP Woodscrews 8 X 1.75"	44.4	8	4.2	200
QWDSR8-2	Pozi Round Head Twin Thread BZP Woodscrews 8 X 2"	50.8	8	4.2	200
QWDSR8-225	Pozi Round Head Twin Thread BZP Woodscrews 8 X 2.25"	57.2	8	4.2	200
QWDSR8-25	Pozi Round Head Twin Thread BZP Woodscrews 8 X 2.5"	63.5	8	4.2	200
QWDSR8-3	Pozi Round Head Twin Thread BZP Woodscrews 8 X 3"	76.2	8	4.2	100
QWDSR10-1	Pozi Round Head Twin Thread BZP Woodscrews 10 X 1"	25.4	9	4.8	200
QWDSR10-125	Pozi Round Head Twin Thread BZP Woodscrews 10 X 1.25"	31.7	9	4.8	200
QWDSR10-15	Pozi Round Head Twin Thread BZP Woodscrews 10 X 1.5"	40	9	4.8	200
QWDSR10-175	Pozi Round Head Twin Thread BZP Woodscrews 10 X 1.75"	44.4	9	4.8	200
QWDSR10-2	Pozi Round Head Twin Thread BZP Woodscrews 10 X 2"	50.8	9	4.8	200
QWDSR10-25	Pozi Round Head Twin Thread BZP Woodscrews 10 X 2.5"	63.5	9	4.8	100
QWDSR10-3	Pozi Round Head Twin Thread BZP Woodscrews 10 X 3"	76.2	9	4.8	100
QWDSR10-4	Pozi Round Head Twin Thread BZP Woodscrews 10 X 4"	101.6	9	4.8	100

Trade Tubs



Part Number	Description	Pack Qty
QTT2U	400 x Red Plastic Wall Plugs & 400 x 8 x 1.5" Countersunk Screws	1
QTT3	200 X Cavity/Plasterboard Metal Self Drive Plugs Complete With 1.5" Screws	1
QTT4	T&E Cable Clips - 400 x 1.0mm ² & 400 x 2.5mm ²	1
QTT5U	400 x Brown Plastic Wall Plugs & 400 x 10 x 2" Countersunk Screws	1
QTT6	T&E Cable Clips - 200 x 1-2.5mm ² (Metal) 400 x 1.5mm ² & 400 x 2.5mm ² (Plastic)	1
QTT7	2Kg x 40mm Clout Nails	1
QTT8	400 x Red Plastic Wall Plugs & 400 x 8 x 1.5" Squarelock Woodscrews	1
QTT9	70 x 50mm, 20 x 40mm & 10 x 50mm Fire-Safe Cable Clips, 100 x Red Plastic Wall Plugs & 100 x 8 x 1.5" Countersunk Screws	1
QTT10	100 x 20mm Open Cable Grommets, 400 x Red Plastic Wall Plugs & 400 x 8 x 1.5" Countersunk Screws	1
QTT11	400 x Red LSF 28 P Clips & 400 x Red LSF 302 Saddle Clips	1

Pozi Panhead Machine Screws



Part Number	Description	Thread Length (mm)	Head Dia. (mm)	Thread Dia. (mm)	Pack Qty
QPPMS412	Pozi Panhead BZP Machine Screws M4 x 12mm	12	8	M4	100
QPPMS416	Pozi Panhead BZP Machine Screws M4 x 16mm	16	8	M4	100
QPPMS420	Pozi Panhead BZP Machine Screws M4 x 20mm	20	8	M4	100
QPPMS425	Pozi Panhead BZP Machine Screws M4 x 25mm	25	8	M4	100
QPPMS450	Pozi Panhead BZP Machine Screws M4 x 50mm	50	8	M4	100
QPPMS510	Pozi Panhead BZP Machine Screws M5 x 10mm	10	10	M5	100
QPPMS512	Pozi Panhead BZP Machine Screws M5 x 12mm	12	10	M5	100
QPPMS516	Pozi Panhead BZP Machine Screws M5 x 16mm	16	10	M5	100
QPPMS520	Pozi Panhead BZP Machine Screws M5 x 20mm	20	10	M5	100
QPPMS525	Pozi Panhead BZP Machine Screws M5 x 25mm	25	10	M5	100
QPPMS530	Pozi Panhead BZP Machine Screws M5 x 30mm	30	10	M5	100
QPPMS540	Pozi Panhead BZP Machine Screws M5 x 40mm	40	10	M5	100
QPPMS550	Pozi Panhead BZP Machine Screws M5 x 50mm	50	10	M5	100
QPPMS612	Pozi Panhead BZP Machine Screws M6 x 12mm	12	12	M6	100
QPPMS616	Pozi Panhead BZP Machine Screws M6 x 16mm	16	12	M6	100
QPPMS620	Pozi Panhead BZP Machine Screws M6 x 20mm	20	12	M6	100
QPPMS625	Pozi Panhead BZP Machine Screws M6 x 25mm	25	12	M6	100
QPPMS630	Pozi Panhead BZP Machine Screws M6 x 30mm	30	12	M6	100
QPPMS650	Pozi Panhead BZP Machine Screws M6 x 50mm	50	12	M6	100

BZP Panhead Machine Screws



Part Number	Description	Thread Length (mm)	Thread Size	Pack Qty
QMS4x6	Slotted Panhead BZP Machine Screws M4 x 6mm	6	M4	100
QMS4x8	Slotted Panhead BZP Machine Screws M4 x 8mm	8	M4	100
QMS4x10	Slotted Panhead BZP Machine Screws M4 x 10mm	10	M4	100
QMS4x12	Slotted Panhead BZP Machine Screws M4 x 12mm	12	M4	100
QMS4x16	Slotted Panhead BZP Machine Screws M4 x 16mm	16	M4	100
QMS4x20	Slotted Panhead BZP Machine Screws M4 x 20mm	20	M4	100
QMS4x25	Slotted Panhead BZP Machine Screws M4 x 25mm	25	M4	100
QMS4x30	Slotted Panhead BZP Machine Screws M4 x 30mm	30	M4	100
QMS4x35	Slotted Panhead BZP Machine Screws M4 x 35mm	35	M4	100
QMS4x40	Slotted Panhead BZP Machine Screws M4 x 40mm	40	M4	100
QMS4x50	Slotted Panhead BZP Machine Screws M4 x 50mm	50	M4	100

Brass Panhead Machine Screws



Part Number	Description	Thread Length (mm)	Thread Size	Pack Qty
QMS4-6B	Slotted Panhead Brass Machine Screws M4 x 6mm	6	M4	100
QMS4-8B	Slotted Panhead Brass Machine Screws M4 x 8mm	8	M4	100
QMS4-10B	Slotted Panhead Brass Machine Screws M4 x 10mm	10	M4	100
QMS4-12B	Slotted Panhead Brass Machine Screws M4 x 12mm	12	M4	100
QMS4-16B	Slotted Panhead Brass Machine Screws M4 x 16mm	16	M4	100
QMS4-20B	Slotted Panhead Brass Machine Screws M4 x 20mm	20	M4	100
QMS4-25B	Slotted Panhead Brass Machine Screws M4 x 25mm	25	M4	100
QMS4-30B	Slotted Panhead Brass Machine Screws M4 x 30mm	30	M4	100
QMS4-35B	Slotted Panhead Brass Machine Screws M4 x 35mm	35	M4	100
QMS4-40B	Slotted Panhead Brass Machine Screws M4 x 40mm	40	M4	100
QMS4-50B	Slotted Panhead Brass Machine Screws M4 x 50mm	50	M4	100

For nuts & washers please see **Page 46**

Countersunk Machine Screws



Part Number	Description	Thread Length (mm)	Thread Size	Pack Qty
QRCSM35x25	Slotted Raised Countersunk Machine BZP Screws M3.5 x 25mm	25	M3.5	100
QRCSM35x35	Slotted Raised Countersunk Machine BZP Screws M3.5 x 35mm	35	M3.5	100
QRCSM35x40	Slotted Raised Countersunk Machine BZP Screws M3.5 x 40mm	40	M3.5	100
QRCSM35x50	Slotted Raised Countersunk Machine BZP Screws M3.5 x 50mm	50	M3.5	100
QRCSM35x75	Slotted Raised Countersunk Machine BZP Screws M3.5 x 75mm	75	M3.5	100

All Raised Countersunk Machine screws are Zinc plated.

Set Screws



Part Number	Description	Length (mm)	Thread Size	Pack Qty
QHH6-25BZP	Hexagon Head BZP Set Screws M6 x 25mm	25	M6	100
QHH8-25BZP	Hexagon Head BZP Set Screws M8 x 25mm	25	M8	100
QHH10-25BZP	Hexagon Head BZP Set Screws M10 x 25mm	25	M10	100

Mudguard Washers - BZP



Part Number	Description	Internal Diameter (mm)	External Diameter (mm)	Pack Qty
QMG6-25	Mudguard Washers M6 x 25mm	6.6	25	100
QMG8-25	Mudguard Washers M8 x 25mm	8.4	25	100
QMG10-25	Mudguard Washers M10 x 25mm	10.5	25	100

Washers - BZP



Part Number	Description	Internal Diameter (mm)	External Diameter (mm)	Pack Qty
QF6BZP1	Flat BZP Washers M6	6.6	12	100
QF8BZP	Flat BZP Washers M8	8.4	16	10
QF10BZP1	Flat BZP Washers M10	10.5	20	100

Nuts - BZP



Part Number	Description	Thread Size	Pack Qty
QHN6	Hexagon Nuts M6	M6	100
QHN8	Hexagon Nuts M8	M8	100
QHN10	Hexagon Nuts M10	M10	100

Brass Set Screws



Part Number	Description	Length (mm)	Thread Size	Pack Qty
QBRSSM6X12	Hexagon Head Brass Set Screws M6 x 12mm	12	M6	100
QBRSSM6X16	Hexagon Head Brass Set Screws M6 x 16mm	16	M6	100
QBRSSM6X20	Hexagon Head Brass Set Screws M6 x 20mm	20	M6	100
QBRSSM6X25	Hexagon Head Brass Set Screws M6 x 25mm	25	M6	100
QBRSSM6X30	Hexagon Head Brass Set Screws M6 x 30mm	30	M6	100
QBRSSM6X40	Hexagon Head Brass Set Screws M6 x 40mm	40	M6	100
QBRSSM6X50	Hexagon Head Brass Set Screws M6 x 50mm	50	M6	100
QBRSSM8X20	Hexagon Head Brass Set Screws M8 x 20mm	20	M8	100
QBRSSM8X25	Hexagon Head Brass Set Screws M8 x 25mm	25	M8	100
QBRSSM8X30	Hexagon Head Brass Set Screws M8 x 30mm	30	M8	100
QBRSSM8X40	Hexagon Head Brass Set Screws M8 x 40mm	40	M8	100
QBRSSM8X50	Hexagon Head Brass Set Screws M8 x 50mm	50	M8	100
QBRSSM10X25	Hexagon Head Brass Set Screws M10 x 25mm	25	M10	100
QBRSSM10X30	Hexagon Head Brass Set Screws M10 x 30mm	30	M10	100
QBRSSM10X40	Hexagon Head Brass Set Screws M10 x 40mm	40	M10	100
QBRSSM10X50	Hexagon Head Brass Set Screws M10 x 50mm	50	M10	100

Washers - Brass



Part Number	Description	Internal Diameter (mm)	External Diameter (mm)	Pack Qty
QBWM4	Flat Brass Washers M4	4.2	9	100
QFBWM6	Flat Brass Washers M6	6.6	12	100
QFBWM8	Flat Brass Washers M8	8.4	16	100
QFBWM10	Flat Brass Washers M10	10.5	20	100

Nuts - Brass



Part Number	Description	Thread Size	Pack Qty
QBFNM4	Hexagon Brass Nuts M4	M4	100
QBFHN6	Hexagon Brass Nuts M6	M6	100
QBFHN8	Hexagon Brass Nuts M8	M8	100
QBFHN10	Hexagon Brass Nuts M10	M10	100

Catenary Wire



Part Number	Description	Length (M)	Load Capacity (Kg)	Pack Qty
QCATW3X30	Catenary Wire 3mm x 30m	30	650	1
QCATW3X50	Catenary Wire 3mm x 50m	50	650	1
QCATW3X100	Catenary Wire 3mm x 100m	100	650	1

Part Number	Description	Pack Qty
QCWK	Catenary Wire Kit (3mm x 30m)	1

Catenary Accessories



Part Number	Description	Thread Size	Pack Qty
QCATGRIP	Catenary Wire Grip	M3.5	25

Part Number	Description	Load Capacity (Kg)	Pack Qty
QCATEYELET	Catenary Wire Eyelet	520	10
QCATHP	Catenary Wire Hook Plate	250	1
QCATRP	Catenary Wire Ring Plate	225	1
QSCATSH	Suspension Hooks For Fittings	8	10
QSTRAINM8	Catenary Strainer M8	570	5

Jack Chain



Part Number	Description	Length (M)	Load Capacity (Kg)	Pack Qty
QJC10M	Jack Chain 10 Metre	10	10	1
QJCHD10M	Heavy Duty Jack Chain 10 Metre	10	15	1

Jack Chain Accessories



Part Number	Description	Load Capacity (Kg)	Pack Qty
QJC25HP	25mm Hook Plate	80 (Depending on Substrate)	10
QJCSHP	Ceiling Hook Plate	5 (Depending on Substrate)	10

Masonry Nails



Part Number	Description	Length (mm)	Head Diameter (mm)	Nail Thickness (mm)	Pack Qty
QMN30X30	Medium Duty Masonry Nails 3 x 30mm	30	6	3	100
QMN30X40	Medium Duty Masonry Nails 3 x 40mm	40	6	3	100
QMN30X50	Medium Duty Masonry Nails 3 x 50mm	50	6	3	100
QMN30X60	Medium Duty Masonry Nails 3 x 60mm	60	6	3	100
QMN30X70	Medium Duty Masonry Nails 3 x 70mm	70	6	3	100
QMN30X80	Medium Duty Masonry Nails 3 x 80mm	80	6	3	100
QMN35X35	Heavy Duty Masonry Nails 3.5 x 35mm	35	7	3.5	100
QMN35X50	Heavy Duty Masonry Nails 3.5 x 50mm	50	7	3.5	100

Clout Nails



Part Number	Description	Length (mm)	Head Diameter (mm)	Nail Thickness (mm)	Pack Qty
QCN1KG	40mm Clout Nails (1Kg Bag)	40	8.6	2.7	1

Capping Nails



Part Number	Description	Nail Dimensions (mm)	Washer Dimensions (mm)	Pack Qty
QCAPN	Capping Nails 5 x 25mm	5 Diameter X 25 Length	8 x 1	100
QCAPN30	Capping Nails 5 x 30mm	5 Diameter X 30 Length	8 x 1	100
QCAPN35	Capping Nails 5 x 35mm	5 Diameter X 35 Length	8 x 1	100

Wall Plugs



Part Number	Description	Colour	Drill Size (mm)	Screw Diameter (mm)	Max Fixture Thickness (mm)	Pack Qty
QWPR001	Wall Plugs (Box Loose)	● Red	5.5 - 6	3.5 - 5	5	100
QWPB001	Wall Plugs (Box Loose)	● Brown	7	5-6	5	100

Wall Plugs - For securing light wall units, shelving, brackets and kitchen fittings. Suitable for solid brickwork, masonry or concrete.

Roofing Bolts



Part Number	Description	Length (mm)	Thread Size	Pack Qty
QRB6-12	Roofing Bolts M6 x 12mm	12	M6	100
QRB6-16	Roofing Bolts M6 x 16mm	16	M6	100
QRB6-20	Roofing Bolts M6 x 20mm	20	M6	100
QRB6-25	Roofing Bolts M6 x 25mm	25	M6	100
QRB6-30	Roofing Bolts M6 x 30mm	30	M6	100
QRB6-40	Roofing Bolts M6 x 40mm	40	M6	100
QRB6-50	Roofing Bolts M6 x 50 mm	50	M6	100

Nuts Supplied

Eyebolts



Part Number	Description	Length (mm)	Thread Size	Drill Size (mm)	Minimum Drill Depth (mm)	Pack Qty
Q-04149	EyeBolts M6	78	M6	12	55	2
CC-04150	EyeBolts M8	93	M8	14	70	2

For installing cables, ladder restraints and chains or heavy objects from ceilings or walls. Suitable for solid brickwork, masonry or concrete.

Hook Bolt



Part Number	Description	Length (mm)	Thread Size	Drill Size (mm)	Minimum Drill Depth (mm)	Pack Qty
CC-04152	Hook Bolts M8	95	M8	14	70	2

For installing cables, ladder restraints and chains or heavy objects from ceilings or walls. Suitable for solid brickwork, masonry or concrete.

Projecting Anchor Bolts



Part Number	Description	Length (mm)	Thread Size	Drill Size (mm)	Minimum Drill Depth (mm)	Max Fixture Thickness (mm)	Pack Qty
CC-04141	Projecting Anchors Bolts M6 x 115mm	115	M6	10	55	60	4
Q-04145	Projecting Anchors Bolts M8 x 125mm	125	M8	14	70	60	4
CC-04146	Projecting Anchors Bolts M10 x 135mm	135	M10	16	80	60	4
CC-04147	Projecting Anchors Bolts M10 x 155mm	155	M10	16	80	60	4
CC-04148	Projecting Anchors Bolts M10 x 175mm	175	M10	16	80	100	4
Q-04146	Projecting Anchors Bolts M10 x 135mm	135	M10	16	80	60	4

For installing radiator brackets, ducting, trunking, partitions & overhead objects. Suitable for use with solid brickwork, masonry or concrete.

Hollow Wall Anchors



Part Number	Description	Length (mm)	Thread Size	Drill Size (mm)	Plasterboard Thickness (mm)	Max Fixture Thickness (mm)	Pack Qty
Q-04200	Small Hollow Wall Anchors M4	50	M4	8	12-19	16	10
Q-04202	Medium Hollow Wall Anchors M5	45	M5	9	8-15	12	10
Q-04204	Large Hollow Wall Anchors M6	45	M6	10	8-15	17	10

Small & Medium Anchor - For installing shelving, hooks and bathroom accessories. Suitable for plasterboard, cavity walls and ceilings.

Large Anchor - For installing kitchen cabinets, radiator, brackets and bathroom accessories. Suitable for plasterboard, cavity walls and ceilings.

Wedge Anchor



Part Number	Description	Length (mm)	Thread Size	Drill Size (mm)	Drill Depth with Frame (mm)	Outer Diameter (mm)	Pack Qty
QWA6-25	Wedge Anchors M6 x 25mm	25	M6	8.5	25	8	100
QWA8-30	Wedge Anchors M8 x 30mm	30	M8	10.5	30	10	100
QWA10-40	Wedge Anchors M10 x 40mm	40	M10	12.5	40	12	50

Anchor Bolts



Part Number	Description	Length (mm)	Thread Size	Drill Size (mm)	Minimum Drill Depth (mm)	Max Fixture Thickness (mm)	Pack Qty
Q-04129	Anchors Bolts M6 x 60mm	60	M6	12	55	10	4
Q-04132	Anchors Bolts M8 x 65mm	65	M8	14	70	10	4
Q-04133	Anchors Bolts M8 x 80mm	80	M8	14	70	25	4
Q-04134	Anchors Bolts M8 x 95mm	95	M8	14	70	40	4
Q-04135	Anchors Bolts M10 x 75mm	75	M10	16	80	10	4
Q-04137	Anchors Bolts M10 x 105mm	105	M10	16	80	40	4
CC-04138	Anchors Bolts M10 x 125mm	125	M10	16	80	60	4

For installing garage doors, gate posts, steelwork and heavy equipment. Suitable for brickwork, masonry or concrete.

Metal Toggle Fixings



Part Number	Description	Length (mm)	Thread Size	Drill Size (mm)	Max Fixture Thickness (mm)	Pack Qty
Q-04205	Spring Toggles M5 x 50mm	50	M5	14	15	5
Q-04208	Spring Toggles M5 x 80mm	80	M5	14	45	10

For installing light fittings and other overhead items to cavity walls or low structural strength ceilings. Suitable for ceilings and cavity walls.

Plastic Toggle Fixings



Part Number	Description	Length (mm)	Thread Size	Drill Size (mm)	Max Fixture Thickness (mm)	Pack Qty
CC-04189	Short Toggle Fixings + Screws	35	M6	8	6	5

For light switches, electrical sockets, shelves, hooks and brackets. Suitable for plasterboard, cavity walls or ceilings.

Self Drive Plug & Screws



Part Number	Description	Length (mm)	Head Diameter (mm)	Max Fixture Thickness (mm)	Pack Qty
QCVFIX	Metal Self Drive Plugs + 8 x 35mm Panhead Screws	28	13	10	100

Metal Self Drive - For shelving, bathroom sanitary ware, hooks and brackets. Suitable for plasterboard, cavity walls and ceilings.

Self Drive Screws - Pozi



Part Number	Description	Length (mm)	Head Diameter (mm)	Max Fixture Thickness (mm)	Pack Qty
QWHC42-13	Self Drive Screws 4.2 x 13mm	13	9.5	8	100
QWHC48-16	Self Drive Screws 4.8 x 16mm	16	9.5	9	100
QWHC55-20	Self Drive Screws 5.5 x 20mm	20	9.5	13	100

Self Drive Screws - Hexagon Head



Part Number	Description	Length (mm)	Head Dia. (mm)	Thread Dia. (mm)	Pack Qty
QHHC48-13	Hexagon Head BZP Self Drive Screws 4.8 x 13mm	13	10	4.8	200
QHHC48-16	Hexagon Head BZP Self Drive Screws 4.8 x 16mm	16	10	4.8	200
QHHC48-19	Hexagon Head BZP Self Drive Screws 4.8 x 19mm	19	10	4.8	200
QHHC48-25	Hexagon Head BZP Self Drive Screws 4.8 x 25mm	25	10	4.8	200
QHHC55-19	Hexagon Head BZP Self Drive Screws 5.5 x 19mm	19	10.5	5.5	200
QHHC55-25	Hexagon Head BZP Self Drive Screws 5.5 x 25mm	25	10.5	5.5	200
QHHC55-32	Hexagon Head BZP Self Drive Screws 5.5 x 32mm	32	10.5	5.5	200
QHHC55-38	Hexagon Head BZP Self Drive Screws 5.5 x 38mm	38	10.5	5.5	200
QHHC55-50	Hexagon Head BZP Self Drive Screws 5.5 x 50mm	50	10.5	5.5	200
QHHC63-50	Hexagon Head BZP Self Drive Screws 6.3 x 50mm	50	12.5	6.3	100



THE NO.1 SEALANT & ADHESIVE

The original multi-surface construction sealant & adhesive from Unicrimp®

ONE TUBE DOES EVERYTHING!

User-friendly, hybrid polymer formulation for the ultimate in bonding and sealing. An alternative to mastics, wood and PU adhesives, silicones, acrylics and butyl rubber sealants.

Contains no solvents so will never crack or shrink. Can be applied on wet surfaces, painted or moulded. Very high bond strength with resistance to fungal and bacterial growth.



FROM UNICRIMP®

OB1 Sealant & Adhesive



Part Number	Description	Colour	Pack Qty
OB1SCS290W	OB1 Multi-Surface Construction Sealant & Adhesive - 290ml Cartridge	○ White	1
OB1SCS290C	OB1 Multi-Surface Construction Sealant & Adhesive - 290ml Cartridge	○ Clear	1
OB1SCS290BL	OB1 Multi-Surface Construction Sealant & Adhesive - 290ml Cartridge	● Black	1
OB1SCS290A	OB1 Multi-Surface Construction Sealant & Adhesive - 290ml Cartridge	● Anthracite	1
OB1SCS290G	OB1 Multi-Surface Construction Sealant & Adhesive - 290ml Cartridge	● Grey	1
OB1SCS290S	OB1 Multi-Surface Construction Sealant & Adhesive - 290ml Cartridge	● Silver	1
OB1SCS290B	OB1 Multi-Surface Construction Sealant & Adhesive - 290ml Cartridge	● Brown	1
OB1SCS290T	OB1 Multi-Surface Construction Sealant & Adhesive - 290ml Cartridge	● Terracotta	1
OB1SCS290BE	OB1 Multi-Surface Construction Sealant & Adhesive - 290ml Cartridge	● Beige	1
OB1DUSA290CC	OB1 Diamond Seal & Adhesive - 290ml Cartridge	○ Clear	1

OB1 Surface Cleaner & Paint / Varnish Remover



Part Number	Description	Pack Qty
OB1MPSC500	OB1 Multi Surface Cleaner 500ml Aerosol	1
OB1MSPR500	OB1 Multi-Layer Paint & Varnish Remover 500ml Aerosol	1

OB1 Product Stands C/W Profile



Part Number	Description	Pack Qty
OB1COUNTERSTAND	OB1 Cartridge Counter Display Stand (With Profile Of 60 Cartridges)	1
OB1FLOORSTAND	OB1 Cartridge Floor Display Stand (With Profile Of 192 Cartridges)	1

OB41 Surface Cleaner & Lubricants



Part Number	Description	Pack Qty
OB41SLS400	OB41 Silicone Spray - 400ml	1
OB41MUPO400	OB41 Multi Use Penetrating Oil - 400ml	1
OB41WGS400	OB41 White Grease - 400ml	1
OB41PPC400	OB41 Powerful Plastic Cleaner Spray - 400ml	1
OB41ECC400	OB41 Electrical Contact Cleaner Spray - 400ml	1
OB41UC400	OB41 Universal Cleaner Spray - 400ml	1
OB41MOS400	OB41 6 In 1 Multi Oil Spray - 400ml	1
OB41CTDF400	OB41 Cut Tap & Drill Fluid Spray - 400ml	1

Caulk

Part Number	Description	Colour	Pack Qty
SCONTDC300W	Acrylic Decorators Caulk - (C3) 300ml Cartridge	○ White	1



Silicone Adhesives

Part Number	Description	Colour	Pack Qty
SCONTHMA300C	General Purpose Silicone Adhesives Contractors - 300ml Cartridge	○ Clear	1
SCONTHMA300W	General Purpose Silicone Adhesives Contractors - 300ml Cartridge	○ White	1



Bonding Adhesive

Part Number	Description	Pack Qty
BTKESG310	Solvent Based Bonding Adhesive 310ml Cartridge	1



Grip & Grab

Part Number	Description	Pack Qty
SXMSGGA290W	SX Mighty Strength Grip & Grab Adhesive 290ml	1



Expanding Foam

Part Number	Description	Pack Qty
SXFF500	Hand Held Expanding Foam Can 500ml	1



Plaster Filler

Part Number	Description	Pack Qty
SXPF310W	Instant Plaster Filler Light Weight C3 Tube 310ml Cartridge	1
ZPBF1L	Instant Plaster Filler - White 1 litre Tub	1



Superglue

Part Number	Description	Pack Qty
SXSG50	SX Trade Strength Superglue 50g	1



Adhesive Accessories

Part Number	Description	Pack Qty
GUNSG400	Professional Application Gun	1
BTKESGFW	Bostik Gripfilth Wipes 100 Sheets	1



Earthing Rods

Part Number	Description	Pack Qty
QEP3812	3/8" Earth Rod - 1200mm	1

The 3/8 range are available in single lengths only and cannot be coupled.



Earthing Accessories

Part Number	Description	Pack Qty
QEP38CC	3/8" Rod To Cable Clamp (G Type)	1
QEP38CL	3/8" Rod To Split Connector Clamp	1



Earthing Rods

Part Number	Description	Pack Qty
QEP5812T	5/8" Threaded Earth Rod - 1200mm	1

The 5/8 range includes couplers (sold separately) to join rods together



Earthing Accessories

Part Number	Description	Pack Qty
QEP58CC	5/8" Rod to Cable Clamp (G Type)	1
QEP58CL	5/8" Rod To Threaded Split Connector Clamp	1
QEP58TC	5/8" Threaded Coupler	1
QEP58TDS	5/8" Threaded Driving Stud	1



Inspection Pits

Part Number	Description	Pack Qty
QEPIPON	Concrete Inspection Pit	1
QEPIPPLA	Polymer Inspection Pit	1



Earth Electrode Box

Part Number	Description	Pack Qty
QEP1B	Earth Electrode Box	1



Earthing Box

Part Number	Description	Pack Qty
QEP2G	100mm x 100mm x 80mm Earthing Box c/w Safety Label	1



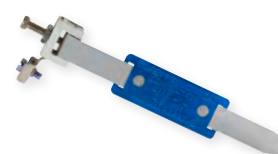
Earthing Clamps

Part Number	Description	Pack Qty
QBEPS	Brass Earthing Plate - Single	2
QBEPD	Brass Earthing Plate - Double	2



Earth Bonding Clamps

Part Number	Description	Pack Qty
QEC14	Earth Bonding Clamps EC14 Dry Conditions	20
QEC15	6" Earth Bonding Clamps EC15 Wet Conditions	20
QEC15-9	9" Earth Bonding Clamps EC15 Wet Conditions	20
QEC15-12	12" Earth Bonding Clamps EC15 Wet Conditions	20
QSEC	Speedy Panel Earth Bonding Clamps Dry Conditions	100



Tested and approved to BS951

Dust Sheet

Part Number	Description	Pack Qty
QCTDS	Cotton Twill Dust Sheet - 3600mm x 2700mm	1



Rubble Sacks

Part Number	Description	Pack Qty
QHDLRS	Heavy Duty Large 135L Size Rubble Sacks	1 Roll of 10
QHDSRS	Heavy Duty Standard 70L Size Rubble Sacks	1 Roll of 10



Torque Driver

Part Number	Description	Pack Qty
QTOURQ	Torque Driver Set - Contains: Screwdriver Handle, 1.7Nm & 2.3Nm Torques, Flat & Phillips Heads	1



Lock Off Kits

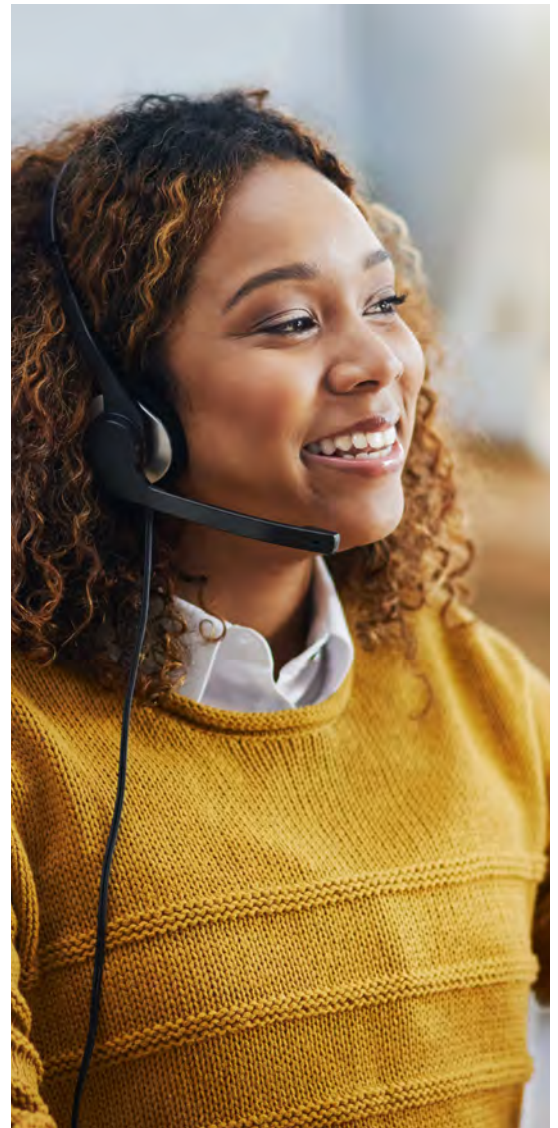
Part Number	Description	Pack Qty
QTAG5	Basic Lock Off Kit	1
QTAG4	Contractor Lock Off Kit	1





Sales Office

Based alongside our distribution facility this busy sales office provides a central point of contact for all customer service requirements. The professionalism skills and knowledge of our internal sales team enables us to provide the high standard of service that we know our customers expect. Our on-line ordering facility is also managed within this office.



“At Unicrimp® the whole business is focused on the customer. We aim to provide market leading levels of service and customer support.

Our forward thinking and investment for the future together with our dedicated employees enable a dynamic working environment that provides the platform for continued growth.”

- Mike Jackson
Sales Director

In-House Studio

All marketing support including product literature and point of sale material is designed by our dedicated in-house design studio. This facility enables us to offer bespoke marketing support to our customers.

Product Development

Unicrimp® products are designed with our customer/the installer very much in mind. Our purpose built facilities and dedicated product development team, based in the UK allows us the flexibility to design and develop these products based on customer feedback and market research, ensuring we are producing a relevant, reliable and quality range of products.



Distributor Network

Unicrimp® distributes exclusively through the electrical wholesale trade. These include Independent Wholesalers, National Wholesale Groups and Buying Consortium making the products readily available throughout the UK.



Warehouse / Service

Our centrally located 150,000sq ft Warehouse and Distribution Centre allow us to deliver our products on time every time.

Stock

We understand the importance of stock availability and are committed to having at least 97% stock availability at our central distribution centre at any given time.



UNICRIMP® Website

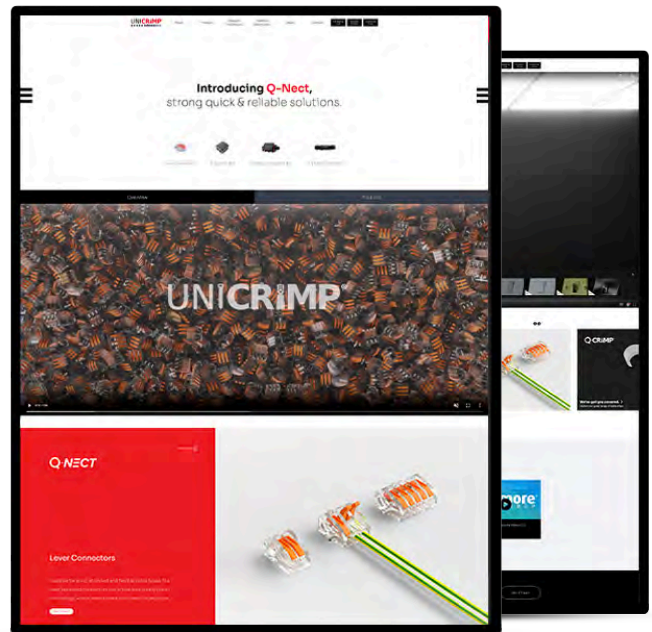
The newly refreshed Unicrimp site provides customers with access to detailed product information for the company's extensive range of cable management consumables.

With regular updates on new products and details of developments within our business, the site is a great source of information.

Online Ordering

The site now incorporates a number of improved features that allow users to access new information directly and easily:

- Ordering 24 hours a day 7 days a week with the ability to check current stock levels as required, meaning you are not restricted to ordering during normal office hours.
- Order upload - You can now upload your order directly to our online ordering using a CSV or PDF.
- The order tracking service keeps you up to date with the progress of your shipment.
- Managing your administration paperwork is now even easier with instant access to reports and essential documents at a click of a button.
- A 'quick buy tab' and the ability to store the most common orders for repeated use, adds to the versatility and flexibility of the revised system.



The Full Q-Crimp® Range

The full product range can be found online with specific information about each product and access to the latest Unicrimp® catalogue.



To Register: E-mail us at sales@unicrimp.com or call our Sales Office on **01827 300 600** and one of our Sales Representatives will be more than happy to get you on-line.

Scolmore® Group App

The Scolmore® Group app allows you to use your smart phone to browse our complete range of products, add products to your Favourites or to the Quote Basket and allows you to email the contents of the basket back to yourself.

With Scolmore®, OVIA® Lighting, ESP® & UNICRIMP® products available you can use the search facility to easily locate the products required.

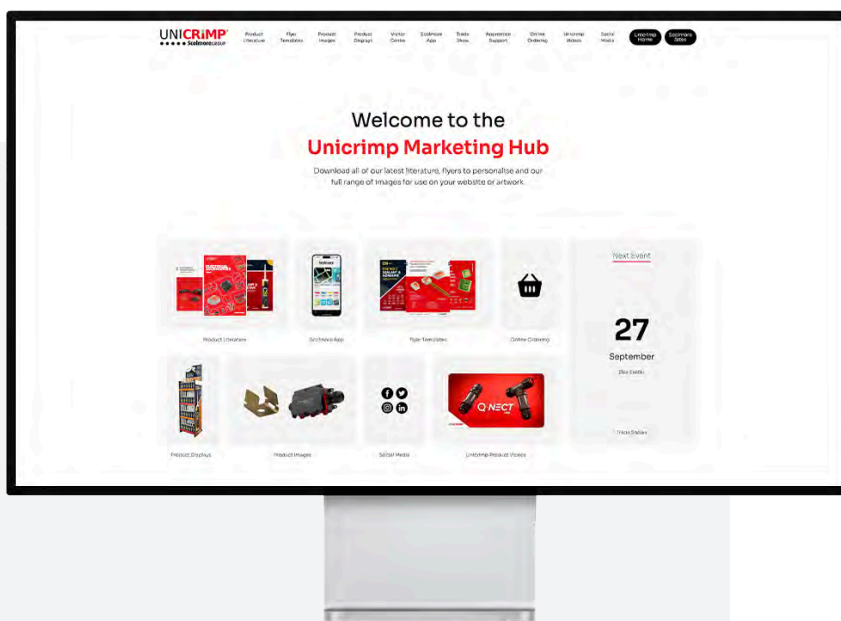
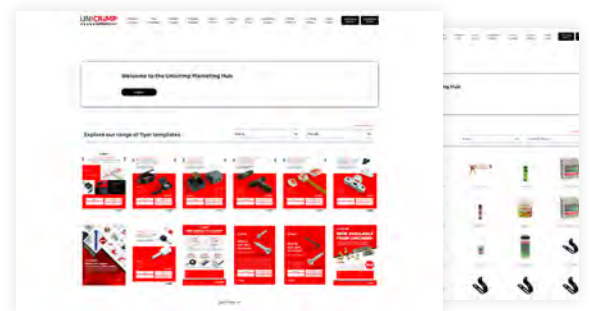
Our App also has a useful tool kit featuring:

Quick Quote Calculator, Zs Values, Cables Selection & Voltage Drop, Adiabatic Equation Calculator, Power Factor Calculator, KVA Converter, Lighting Cost Saving Calculator, Lighting No. Calculator and many more...



Marketing Hub

The Marketing Hub gives customers the opportunity to enhance their own marketing facilities with very little effort or cost. A selection of templates are available featuring many of our popular products. These templates can be customised with our stockists' details to provide maximum impact and optimise local sales opportunities.



Print Ready Leaflets & More!

Promotional leaflets are available to download for UNICRIMP®. They all have editable sections so you can add your companies details. Also download all of our product images, all saved by product code and at a perfect resolution for your website.

unicrimp.com/product-images

PRODUCT SKU		PRODUCT SKU		PRODUCT SKU		PRODUCT SKU	
1910BSA	29	QARB12G	38	QBRSSM6X40	46	QCGM12GRY	28
1920B	29	QARB12R	38	QBRSSM6X50	46	QCGM12RED	28
1920BL	29	QARB12W	38	QBRSSM8X20	46	QCGM16BLK	28
1920BR	29	QARB17B	38	QBRSSM8X25	46	QCGM16GRY	28
1920GR	29	QARB17G	38	QBRSSM8X30	46	QCGM16RED	28
1920GY	29	QB1-5	16	QBRSSM8X40	46	QCGM16WHT	28
1920MX01	29	QB10	16	QBRSSM8X50	46	QCGM20AG	28
1920MX02	29	QB120	16	QBTB4	30	QCGM20BLK	28
1920R	29	QB150	16	QBTB8	30	QCGM20GRY	28
1920W	29	QB16	16	QBW20	26	QCGM20LBLK	28
1920Y	29	QB185	16	QBW20-3	26	QCGM20LGRY	28
1920YG	29	QB2-5	16	QBW20-LSF	26	QCGM20LRED	28
1933B	29	QB240	16	QBW20S	26	QCGM20LWHT	28
1933BL	29	QB25	16	QBW20S-3	26	QCGM20RED	28
1933BR	29	QB35	16	QBW20S-LSF	26	QCGM20WHT	28
1933GR	29	QB4-6	16	QBW20SS	26	QCGM25BLK	28
1933GY	29	QB50	16	QBW25	26	QCGM25GRY	28
1933R	29	QB70	16	QBW25-3	26	QCGM25RED	28
1933W	29	QB95	16	QBW25-LSF	26	QCGM25WHT	28
1933Y	29	QBAB4F	12	QBW32	26	QCGM32BLK	28
1933YG	29	QBAB4M	12	QBW32-3	26	QCGM32GRY	28
BTKESG310	55	QBAB5F	12	QBW32-LSF	26	QCGM32RED	28
BTKESGFW	56	QBAB5M	12	QBW40	26	QCGM32TPW	28
BTKFPIA300W	38	QBB	12	QBW40-3	26	QCGM32WHT	28
BUK30623574	38	QBBL18	12	QBW40-LSF	26	QCGM40BLK	28
BUK30811859	38	QBBL9	12	QBW50	26	QCGM40GRY	28
CC-04138	51	QBEPD	32,58	QBW50-LSF	26	QCGM40TPW	28
CC-04141	50	QBEPS	32,58	QBW50S	26	QCGM40WHT	28
CC-04146	50	QBF3	12	QBW63	26	QCGM50BLK	28
CC-04147	50	QBF3N	12	QBW63-LSF	26	QCGM50GRY	28
CC-04148	50	QBF4N	12	QBW63S	26	QCGM50WHT	28
CC-04150	49	QBF5	12	QBWM4	46	QCGM63BLK	28
CC-04152	49	QBF6	12	QBWS6-1	41	QCGM63GRY	28
CC-04189	51	QBFHN10	46	QBWS8-075	41	QCGM63WHT	28
GUNSG400	56	QBFHN6	46	QBWS8-1	41	QCN1KG	48
OB1COUNTERSTAND	54	QBFHN8	46	QBWS8-15	41	QCT015-3	15
OB1DUSA290CC	54	QBFNM4	46	QBWS8-175	41	QCT015-4	15
OB1FLOORSTAND	54	QBFPO48F5	12	QBWS8-20	41	QCT015-5	15
OB1MPSC500	54	QBFPO48F8	12	QC10	34	QCT025-3	15
OB1MSPR500	54	QBFPO63F	12	QC10MBK	35	QCT025-4	15
OB1SCS290A	54	QBFR05	14	QC11	34	QCT025-5	15
OB1SCS290B	54	QBFR075	14	QC11MBK	35	QCT025-6	15
OB1SCS290BE	54	QBFR1	14	QC12	34	QCT04-10	15
OB1SCS290BL	54	QBFR10	14	QC12MBK	35	QCT04-6	15
OB1SCS290C	54	QBFR15	14	QC14	34	QCT04-8	15
OB1SCS290G	54	QBFR25	14	QC14MBK	35	QCT06-10	15
OB1SCS290S	54	QBFR4	14	QC16	34	QCT06-4	15
OB1SCS290T	54	QBFR6	14	QC16MBK	35	QCT06-5	15
OB1SCS290W	54	QBG32TP	28	QC18	34	QCT06-6	15
OB41CTDF400	54	QBG40TP	28	QC18MBK	35	QCT06-8	15
OB41ECC400	54	QBP12	12	QC20	34	QCT10-10	15
OB41MOS400	54	QBPO48F5	12	QC20MBK	35	QCT10-12	15
OB41MUPO400	54	QBPO48F8	12	QC3MBK	35	QCT10-5	15
OB41PPC400	54	QBPO48M5	12	QC4	34	QCT10-6	15
OB41SLS400	54	QBPO48M8	12	QC4MBK	35	QCT10-8	15
OB41UC400	54	QBPO63F	12	QC5	34	QCT120-10	16
OB41WGS400	54	QBPO63M	12	QC5MBK	35	QCT120-12	16
Q-04129	51	QBPO85F	12	QC6	34	QCT120-14	16
Q-04132	51	QBPOA63	12	QC6MBK	35	QCT120-16	16
Q-04133	51	QBR10	12	QC7	34	QCT120-20	16
Q-04134	51	QBR12	12	QC7MBK	35	QCT120-8	16
Q-04135	51	QBR3	12	QC8	34	QCT150-10	16
Q-04137	51	QBR37	12	QC8MBK	35	QCT150-12	16
Q-04145	50	QBR4	12	QC9	34	QCT150-14	16
Q-04146	50	QBR5	12	QC9MBK	35	QCT150-16	16
Q-04149	49	QBR6	12	QCAPN	48	QCT150-20	16
Q-04200	50	QBR8	12	QCAPN30	48	QCT150-8	16
Q-04202	50	QBRSSM10X25	46	QCAPN35	48	QCT16-10	15
Q-04204	50	QBRSSM10X30	46	QCATEYELET	47	QCT16-12	15
Q-04205	51	QBRSSM10X40	46	QCATGRIP	47	QCT16-6	15
Q-04208	51	QBRSSM10X50	46	QCATHP	47	QCT16-8	15
QAE1W20	25	QBRSSM6X12	46	QCATRP	47	QCT185-10	16
QAE1W20S	25	QBRSSM6X16	46	QCATW3X100	47	QCT185-12	16
QAE1W25	25	QBRSSM6X20	46	QCATW3X30	47	QCT185-14	16
QAE1W32	25	QBRSSM6X25	46	QCATW3X50	47	QCT185-16	16
QARB12B	38	QBRSSM6X30	46	QCGM12BLK	28	QCT185-20	16

PRODUCT SKU		PRODUCT SKU		PRODUCT SKU		PRODUCT SKU	
QCT240-10	16	QEC15-9	58	QHN6	45	QOE8553BLK	32
QCT240-12	16	QEP1B	57	QHN8	45	QOE8553BLKLF	32
QCT240-14	16	QEP2G	58	QHS12MP225	22	QOE8553BLKTF	32
QCT240-16	16	QEP3812	57	QHS19MP225	22	QP2242R2	30
QCT25-10	15	QEP38CC	57	QHS4MP225	22	QP3242O2	30
QCT25-12	15	QEP38CL	57	QHS6MP225	22	QP4242Y2	30
QCT25-5	15	QEP5812T	57	QHS9MP225	22	QP5242T2	30
QCT25-6	15	QEP58CC	57	QHSB1	11	QP6242P2	30
QCT25-8	15	QEP58CL	57	QHSB2	12	QP8242B2	30
QCT35-10	15	QEP58TC	57	QHSB5	13	QPC28LSFB	37
QCT35-12	15	QEP58TDS	57	QJ12B	33	QPC28LSFR	37
QCT35-6	15	QEP1PCON	57	QJ12W	33	QPC28LSFW	37
QCT35-8	15	QEP1PPLA	57	QJC10M	47	QPC30LSFB	37
QCT50-10	15	QES2	22	QJC25HP	47	QPC30LSFR	37
QCT50-12	15	QES2BL	22	QJCHD10M	47	QPC30LSFW	37
QCT50-6	15	QES2BR	22	QJC5HP	47	QPC32LSFB	37
QCT50-8	15	QES3	22	QL2322	31	QPC32LSFR	37
QCT70-10	16	QES3BL	22	QL3322	31	QPC32LSFW	37
QCT70-12	16	QES3BR	22	QL5322	31	QPC34LSFB	37
QCT70-14	16	QES4	22	QMA48-40	36	QPC34LSFR	37
QCT70-6	16	QES4BL	22	QMC25	36	QPC34LSFW	37
QCT70-8	16	QES4BR	22	QMC25GY	36	QPC37LSFB	37
QCT95-10	16	QES5	22	QMC25RD	36	QPC37LSFR	37
QCT95-12	16	QEXT	41	QMC25WH	36	QPC37LSFW	37
QCT95-14	16	QF10BZP1	45	QMC6	36	QPPMS412	43
QCT95-16	16	QF6BZP1	45	QMC6GY	36	QPPMS416	43
QCT95-8	16	QF8BZP	45	QMC6RD	36	QPPMS420	43
QCTDS	58	QFBWM10	46	QMC6WH	36	QPPMS425	43
QCVMFX	52	QFBWM6	46	QMCTBL150I	18	QPPMS450	43
QCW20	27	QFBWM8	46	QMCTBL200S	18	QPPMS510	43
QCW20-4	27	QFC1	33	QMCTBL280S	18	QPPMS512	43
QCW20-LSF	27	QFC2	33	QMCTBL385S	18	QPPMS516	43
QCW20S	27	QFC3	33	QMG10-25	45	QPPMS520	43
QCW20S-4	27	QFC4	33	QMG6-25	45	QPPMS525	43
QCW20S-LSF	27	QFC5	33	QMG8-25	45	QPPMS530	43
QCW20SS	27	QFC6	33	QMM9	22	QPPMS540	43
QCW25	27	QFC7	33	QMN30X30	48	QPPMS550	43
QCW25-4	27	QFGFC25	36	QMN30X40	48	QPPMS612	43
QCW25-LSF	27	QFGFC40	36	QMN30X50	48	QPPMS616	43
QCW32	27	QFGFC50	36	QMN30X60	48	QPPMS620	43
QCW32-4	27	QFWC1	33	QMN30X70	48	QPPMS625	43
QCW32-LSF	27	QFWC4	33	QMN30X80	48	QPPMS630	43
QCW40	27	QFWC5	33	QMN35X35	48	QPPMS650	43
QCW40-4	27	QFWC6	33	QMN35X50	48	QPPST8-1	41
QCW40-LSF	27	QFWC7	33	QMS4-10B	44	QPPST8-15	41
QCW50	27	QGROM20CLOSED	34	QMS4-12B	44	QPPST8-50	41
QCW50-LSF	27	QGROM20OPEN	34	QMS4-16B	44	QPPST8-75	41
QCW50S	27	QGROM25CLOSED	34	QMS4-20B	44	QRAB4F	11
QCW63	27	QGROM25OPEN	34	QMS4-25B	44	QRAB4M	11
QCW63-LSF	27	QGROM32CLOSED	34	QMS4-30B	44	QRB	11
QCW63S	27	QGROM32OPEN	34	QMS4-35B	44	QRB6-12	49
QCW75	27	QGROMQ20CLOSED	34	QMS4-40B	44	QRB6-16	49
QCW75S	27	QGROMQ20OPEN	34	QMS4-50B	44	QRB6-20	49
QCWK	47	QGROMQ25CLOSED	34	QMS4-6B	44	QRB6-25	49
QCXT20	24	QGROMQ25OPEN	34	QMS4-8B	44	QRB6-30	49
QCXT20S	24	QGROMQ32CLOSED	34	QMS4X10	43	QRB6-40	49
QCXT25	24	QGROMQ32OPEN	34	QMS4X12	43	QRB6-50	49
QCXT32	24	QGT10B	34	QMS4X16	43	QRB6-50	49
QCXT40	24	QGT3B	34	QMS4X20	43	QRB6-50	49
QCXT50	24	QGT5B	34	QMS4X25	43	QRB6-50	49
QCXT63	24	QHDLRS	58	QMS4X30	43	QRB6-50	49
QDBFR05	14	QHDSRS	58	QMS4X35	43	QRC1	33
QDBFR075	14	QHH10-25BZP	45	QMS4X40	43	QRC10	33
QDBFR1	14	QHH6-25BZP	45	QMS4X50	43	QRC11	33
QDBFR10	14	QHH8-25BZP	45	QMS4X6	43	QRC12	33
QDBFR15	14	QHHC48-13	52	QMS4X8	43	QRC13	33
QDBFR25	14	QHHC48-16	52	QOE3052BLK	32	QRC14	33
QDBFR4	14	QHHC48-19	52	QOE3053BLK	32	QRC15	33
QDBFR6	14	QHHC48-25	52	QOE5232BLK	32	QRC16	33
QDC1	33	QHHC55-19	52	QOE8332BLK	32	QRC17	33
QDC2	33	QHHC55-25	52	QOE8333BLK	32	QRC18	33
QDT50X50	29	QHHC55-32	52	QOE8342BLK	32	QRC1B	33
QDWS35-38	41	QHHC55-38	52	QOE8343BLK	32	QRC2	33
QEC14	58	QHHC55-50	52	QOE8553AGY	32	QRC2B	33
QEC15	58	QHHC63-50	52	QOE8553AGYF	32	QRC3	33
QEC15-12	58	QHN10	45	QOE8553AGYTF	32	QRC4	33
				QOE8553AGYTF	32	QRC5	33

PRODUCT SKU		PRODUCT SKU		PRODUCT SKU		PRODUCT SKU	
QRC6	33	QSL10-175	39	QTB200M	17	QWA8-30	50
QRC7	33	QSL10-2	39	QTB200RE	20	QWDS6X075	40
QRC8	33	QSL10-25	39	QTB200S	18	QWDS6X1	40
QRC9	33	QSL10-3	39	QTB22	21	QWDS6X125	40
QRCSM35X25	44	QSL8-075	39	QTB230XH	20	QWDS6X15	40
QRCSM35X35	44	QSL8-1	39	QTB250S	18	QWDSR10-1	42
QRCSM35X40	44	QSL8-125	39	QTB280XH	20	QWDSR10-125	42
QRCSM35X50	44	QSL8-15	39	QTB290I	19	QWDSR10-15	42
QRCSM35X75	44	QSL8-175	39	QTB30	30	QWDSR10-175	42
QRF3	11	QSL8-2	39	QTB300LH	19	QWDSR10-2	42
QRF3N	11	QSL8-225	39	QTB300RE	20	QWDSR10-25	42
QRF4N	11	QSL8-25	39	QTB300S	18	QWDSR10-3	42
QRF5	11	QSL8-3	39	QTB370I	19	QWDSR10-4	42
QRF6	11	QSST150S	35	QTB370LH	19	QWDSR6-1	42
QRFPO28F5	11	QSST200S	35	QTB370RE	20	QWDSR8-075	42
QRFPO28F8	11	QSST300LH	35	QTB370S	18	QWDSR8-1	42
QRFPO48F5	11	QSST300S	35	QTB380XH	20	QWDSR8-125	42
QRFPO48F8	11	QSST360LH	35	QTB430S	18	QWDSR8-15	42
QRFPO63F	11	QSST360S	35	QTB450H	20	QWDSR8-175	42
QRP12	11	QSST520LH	35	QTB480XH	20	QWDSR8-2	42
QRPO28F5	11	QSST520S	35	QTB5	30	QWDSR8-225	42
QRPO28F8	11	QSST840LH	35	QTB550H	20	QWDSR8-25	42
QRPO28M5	11	QSSTM-4	36	QTB550XH	20	QWDSR8-3	42
QRPO28M8	11	QSSTM-6	36	QTB730XH	20	QWHC42-13	52
QRPO48F5	11	QSTRAINM8	47	QTB760H	20	QWHC48-16	52
QRPO48F8	11	QT100M	17	QTB80M	20	QWHC55-20	52
QRPO48M5	11	QT1030XH	20	QTB810H	17	QWPB001	48
QRPO48M8	11	QT120M	17	QTB880XH	20	QWPR001	48
QRPO63F	11	QT120S	18	QTB80M	20	QWS10-10	40
QRPO63M	11	QT150I	19	QTB810H	17	QWS10-125	40
QRPOA63	11	QT150LH	19	QTB880XH	20	QWS10-15	40
QRR10	11	QT160S	18	QTB80M	20	QWS10-175	40
QRR12	11	QT165M	17	QTB810H	17	QWS10-20	40
QRR3	11	QT190S	18	QTB880XH	20	QWS10-25	40
QRR37	11	QT200I	19	QTB80M	20	QWS10-3	40
QRR4	11	QT200LH	19	QTB810H	17	QWS10-4	40
QRR5	11	QT200M	17	QTB880XH	20	QWS8-075	40
QRR6	11	QT200RE	20	QTB80M	20	QWS8-1	40
QRR8	11	QT200S	18	QTB810H	17	QWS8-125	40
QSBS20	37	QT230XH	20	QTB880XH	20	QWS8-15	40
QSBS20B	37	QT250S	18	QTB80M	20	QWS8-175	40
QSBS20W	37	QT280XH	20	QTB810H	17	QWS8-20	40
QSBS25	37	QT290I	19	QTB880XH	20	QWS8-225	40
QSBS25B	37	QT300LH	19	QTB80M	20	QWS8-25	40
QSBS25W	37	QT300RE	20	QTB810H	17	QWS8-30	40
QSC302LSFB	37	QT300S	18	QTB880XH	20	QYAB5F	13
QSC302LSFR	37	QT370I	19	QTB80M	20	QYAB5M	13
QSC302LSFW	37	QT370LH	19	QTB810H	17	QYB	13
QSC342LSFB	37	QT370RE	20	QTB880XH	20	QYBL10	13
QSC342LSFR	37	QT370S	18	QTB80M	20	QYBL18	13
QSC342LSFW	37	QT380XH	20	QTB810H	17	QYF3N	13
QSC382LSFB	37	QT430S	18	QTB880XH	20	QYF4N	13
QSC382LSFR	37	QT450H	20	QTB80M	20	QYF5	13
QSC382LSFW	37	QT480XH	20	QTB810H	17	QYF6	13
QSCATSH	47	QT550H	20	QTB880XH	20	QYFPO63F	13
QSEC	58	QT550XH	20	QTB80M	20	QYFPO95F	13
QSLR10-1	39	QT730XH	20	QTB810H	17	QYP14	13
QSLR10-125	39	QT760H	20	QTB880XH	20	QYPO63F	13
QSLR10-15	39	QT80M	17	QTAG4	58	QYPO63M	13
QSLR10-175	39	QT810H	20	QTAG5	58	QYPO95F	13
QSLR10-2	39	QT880XH	20	QTB100M	17	QYPOA63	13
QSLR10-25	39	QTAG4	58	QTB1030XH	20	QYR10	13
QSLR10-3	39	QTAG5	58	QTB12	21	QYR12	13
QSLR8-1	39	QTB100M	17	QTB120M	17	QYR4	13
QSLR8-125	39	QTB1030XH	20	QTB120S	18	QYR5	13
QSLR8-15	39	QTB12	21	QTB15	30	QYR6	13
QSLR8-175	39	QTB120M	17	QTB150I	19	QYR8	13
QSLR8-2	39	QTB120S	18	QTB150LH	19	SCONTDC300W	55
QSLR8-225	39	QTB15	30	QTB160S	18	SCONTHMA300C	55
QSLR8-25	39	QTB150I	19	QTB165M	17	SCONTHMA300W	55
QSLR8-3	39	QTB150LH	19	QTB190S	18	SXFF500	56
QSLR8-75	39	QTB160S	18	QTB200I	19	SXMSGGA290W	55
QSL8-BIT	39	QTB165M	17	QTB200LH	19	SXPFF310W	56
QSL10-1	39	QTB190S	18			SXSG50	56
QSL10-125	39	QTB200I	19			ZPBF1L	56
QSL10-15	39	QTB200LH	19				

More from Scolmore® Group...

Click® Wiring Accessories

Scolmore® International is one of the UK's leading manufacturers of electrical accessories.

The company is proud to be a British-based, family-run business with an international reputation for quality, innovation and exemplary customer service.

From our Head Office in the Midlands, we design, develop and manufacture an ever expanding product range for distribution throughout the UK and worldwide.

The Click® Wiring Accessories range remains the number one choice of electricians and contractors who value the flexibility of the modular based range, as well as the one-stop solution that the comprehensive offer allows.

Scolmore House
Mariner, Lichfield Road Industrial Estate Tamworth, Staffordshire, B79 7UL, UK

+44 (0) 1827 63454
sales@scolmore.com
www.scolmore.com



Lighting from Ovia®

Ovia® is an independent lighting brand established by Scolmore® in 2019.

Ovia® brings to market an extensive range of high quality, competitively-priced lighting and lighting control products that offer easy to install solutions across a variety of applications - commercial, industrial, domestic, utility, amenity, floodlighting and emergency lighting.

The comprehensive range was developed on the back of extensive research with customers and contractors and satisfies the requirements of an evolving lighting sector which has been transformed in recent years.

Scolmore House
Mariner, Lichfield Road Industrial Estate Tamworth, Staffordshire, B79 7UL, UK

+44 (0) 1827 300640
sales@oviaUK.com
www.oviauk.com



ESP® Fire Safety & Security

ESP® has been developing and supplying security related products to the UK electrical industry for more than 20 years.

As a leading safety and security product specialist, the company offers a comprehensive range of electronic security and fire detection solutions to meet the requirements of installers and contractors.

At ESP® we create simple, smart solutions for a safer and more comfortable home. Discover a whole range of smart home products. From smart alarm kits, smart cameras, smart sensors and smart door bells, all working together to make your home smarter and safer.

Elite Security Products
Unit 7, Target Park, Shawbank Road, Lakeside, Redditch B98 8YN

+44 (0) 1527 515150
sales@espuk.com
www.espuk.com



United Kingdom

UNICRIMP

Scolmore House, Mariner
Lichfield Road Industrial Estate,
Tamworth, Staffordshire,
B79 7UL

T: +44 (0)1827 300 600
E: sales@unicrimp.com
www.unicrimp.com



Southern Ireland

CLICK Litehouse

18 Corrig Road,
Sandyford Industrial Estate,
Dublin, D18 WV79, Ireland

T: +353 (1) 2811 122
E: sales@clicklighthouse.ie
www.clicklighthouse.ie



Dubai, UAE

Scolmore
MIDDLE EAST

Lake Central Tower,
Office 1803, Business Bay,
Dubai, UAE

UAE Office: +971 4589 6552
E: sales@scolmoreme.com
www.scolmoreme.com



**WORLD
LAND
TRUST**™

www.carbonbalancedprint.com
CBP2262